



**DRAFT**

---

## **City of Hancock Recreation Plan 2011-2015**

---

Adopted [INSERT DATE, 2010]

Prepared for: City of Hancock•399 Quincy Street•Hancock, MI 49930

Prepared by: Western U.P. Planning & Development Region•P.O. Box 365•Houghton, MI 49931



**Table of Contents**

INTRODUCTION.....1

Part 1: COMMUNITY DESCRIPTION .....2

Part 2: ADMINISTRATIVE STRUCTURE .....5

Part 3: RECREATION INVENTORY .....7

Part 4: RECREATION GOALS .....19

Part 5: RECREATION NEEDS - BASIS FOR ACTION PROGRAM .....19

Part 6: CAPITAL IMPROVEMENT PLAN .....21

Part 7: DESCRIPTION OF PLANNING PROCESS .....24

Appendix A: RECREATION SURVEY AND RESULTS..... A-1

Appendix B: CITY COUNCIL MEETING NOTICES AND MINUTES..... B-1

**Table of Figures**

FIGURE 1: CITY OF HANCOCK LOCATION MAP .....3

FIGURE 2: CITY OF HANCOCK ADMINISTRATIVE STRUCTURE.....6

FIGURE 3: CITY OF HANCOCK RECREATION SITES.....8

FIGURE 4: MAASTO HIIHTO SKI TRAIL MAP .....10

FIGURE 5: PROPOSED FINLANDIA UNIVERSITY OUTDOOR SPORTS COMPLEX.....12

**Table of Tables**

TABLE 1: CITY OF HANCOCK POPULATION INFORMATION FROM 2000 CENSUS .....4

TABLE 2: COMPLETED RECREATION PROJECTS SINCE 2000—CITY OF HANCOCK.....19

TABLE 3: 5-YEAR CAPITAL IMPROVEMENT PLAN .....22

TABLE 4: POSSIBLE FUNDING SOURCES.....24

## **INTRODUCTION**

The 2011-2015 City of Hancock Recreation Plan (Plan) has been developed to guide recreation improvements in the City over the next five years. The Plan provides an overview of the community, presents an inventory of existing recreational facilities, and provides a framework for continued improvement and development of recreation facilities in the City of Hancock. The overall goal of the Plan is to establish a program of improvements that meets the recreational needs of the City of Hancock. A five-year plan also qualifies the City of Hancock to apply for Department of Natural Resources & Environment (DNRE) and other grants.

This Plan was developed by a Recreation Plan Committee on behalf of the City of Hancock Recreation Commission for the Hancock City Council. The Western Upper Peninsula Planning and Development Region prepared the Plan for the City of Hancock. Public comments and suggestions were taken under consideration during the development of the Plan. The Plan will continue to be updated, as needed, to address changing needs of the community and its residents. The City Council adopted the Plan on [INSERT DATE].

### **City of Hancock Recreation Commission:**

John Diebel (Keweenaw Nordic Ski Club Representative), Dennis Hagenbuch, Doug Hayrynen, Bonnie Holland, Kevin Kalinec, John Slivon (Council Representative), Thomas Gemignani (Council Representative), Ron Studer, and Mary Pekkala.

### **City of Hancock City Council:**

Bill Laitala (Mayor), Ted Belej, Thomas Gemignani, James Hainault, Lisa McKenzie, and John Slivon. There is currently one open seat on the Council.

**Part 1: COMMUNITY DESCRIPTION**

The City of Hancock, population 4,323 was platted in 1859 and established as a village in 1863. The City is located on the north shore of the Portage Lake Shipping Canal in Houghton County, Michigan (see Figure 1). Bordered by Franklin, Quincy and Hancock Townships to the east, north and west, respectively, the City has a total land area of 2.43 square miles (1,557 acres). The City, in its development, was sculpted out of the steep hillside northern bank of the Portage Lake Shipping Canal.

Prior to the turn of the century and for years after, the economy of Hancock and the Keweenaw Peninsula flourished with the copper mining and smelting industries. However, by 1968 economic problems plagued the industry and virtually all mining activities ceased. Today, two Universities (Finlandia University in Hancock and Michigan Technological University in Houghton), Portage Health, governmental agencies and a strong tourism industry support the area’s diverse economy.

The population of Hancock reached its zenith in 1910 with the height of the Copper industry when the Census Bureau recorded 8,981 residents. However, since 1910 the City has, along with other communities in the Keweenaw Peninsula, experienced a steady decline in its population. In 2009, the Census estimated a decreased population for Hancock. However, due to the presence of local universities, the City estimates its population to be around 4,500-5,000 when accounting for students and expects to see more accurate numbers reflected in the 2010 Census reports.

Population	
City of Hancock (2000)	4,323
City of Hancock (2009 Estimate)	4,153
% Estimated projected population change (2000-2009)	-3.8%



City of Hancock

KEWEENAW COUNTY

Lake Superior

Lake Superior

ONTONAGON COUNTY

BARAGA COUNTY

MARQUETTE COUNTY

IRON COUNTY



- State Highway
- City/Village Limits
- Lakes
- Public Land
- Towns
- Rivers/Streams
- Township Lines

Figure 1 **City of Hancock**  
Location Map

	Created by: WUPDR
	Source: ESRI, MI CGI.
	Date: June 2010

At the time of plan writing, detailed information from the 2009 Census estimate was not available, nor was the 2010 Census information. However, population information from the 2000 Census is provided in the table below.

**Table 1: City of Hancock Population Information from 2000 Census**

Population Distribution		
2000 Census	Total Persons	Percent of Total
Male	2,146	49.6%
Female	2,177	50.4%
Under 5 Years Old	210	4.9%
5 to 17 Years Old	612	14.1%
18 to 64 Years Old	2,625	60.7%
65 Years and Over	876	20.3%
White	4,148	96.0%
Black	33	0.8%
American Indian, Eskimo or Aleut	40	0.9%
Asian or Pacific Islander	47	1.1%
Other	55	1.2%
Mobility or Self Care Limitation (5 years +)	612	14.2%
Age 5-15 with a Disability	32	0.7%
Age 16-64 with a Disability	288	6.7%
Age 65 & Over with a Disability	292	6.8%

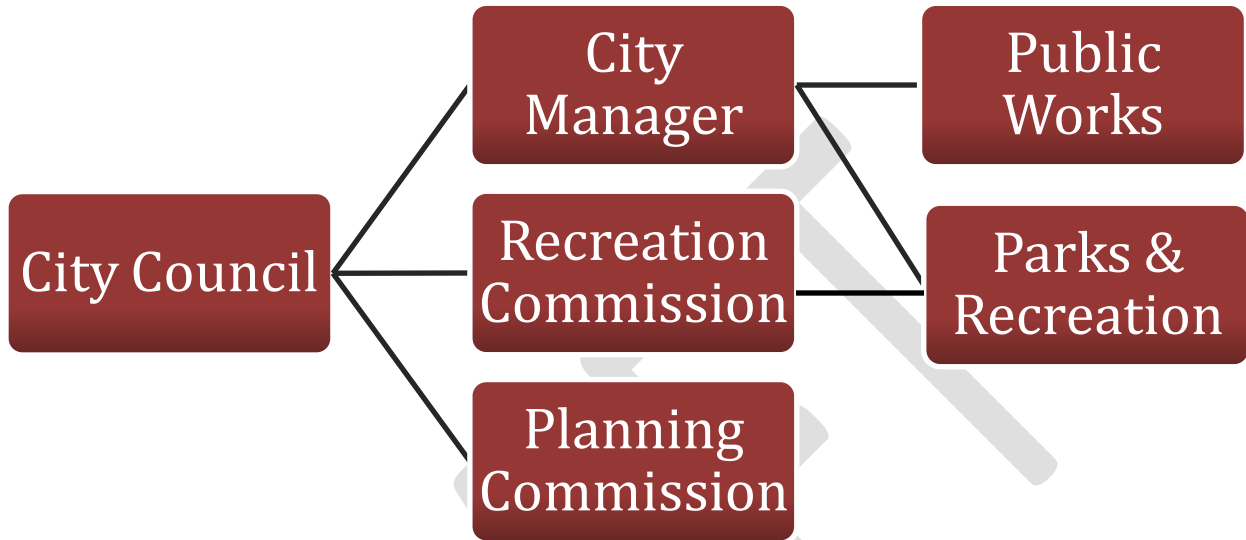
The City of Hancock's location offers potential for drawing visitor dollars. The funnel effect when crossing the Portage Lift Bridge places all tourists entering the Keweenaw Peninsula virtually in the main traffic stream of the City. A strong winter tourism season exists due to the area's heavy snowfall, while summer tourism is fostered by the area's many lakes, forests and parks. A large number of snowmobilers and skiers now visit the Keweenaw Peninsula due largely to an outstanding trail system, reliable snow conditions, mild temperatures and breathtaking beauty. People choose Hancock to work, live and play because of its easy access to the outdoors and the many recreational opportunities available.

Two major highways, U.S. Route 41 and Michigan Route 26, serve the City Of Hancock. A third highway, Michigan Route 203, is a lakeshore spur route that connects Hancock with the Village of Calumet to the north. Houghton County Memorial Airport (CMX) is located a few miles north on U.S. Route 41.

## **Part 2: ADMINISTRATIVE STRUCTURE**

The City uses a council-management form of government and is governed by a 7-member council. A Recreation Commission is in charge of recreational programming and reports to the City Council. Upon the recommendations of the Recreation Commission and Planning Commission, the City Council designates funds as necessary for programming and capital improvements. The City Manager coordinates recreation development and directs the Public Works staff in maintaining recreational facilities. The City's recreation programming and sites are supplemented by Hancock Public Schools and Finlandia University facilities, which are available to local residents.

**Figure 2: City of Hancock Administrative Structure**



The City also partners with the Keweenaw Nordic Ski Club (KNSC), a local non-profit, to maintain and coordinate improvements at the Maasto Hiihto Ski Trail System. The City maintains an Operation Recommendation for the Trail Partnership which includes the following:

1. *City to support the development of the KNSC and volunteers*
2. *KNSC to assist the City in fundraising for the trails*
3. *KNSC to plant trees for wind breaks along exposed trail areas*
4. *KNSC to operate Four Season Chalet on a regular basis*
5. *City and KNSC to groom a portion of Swedetown Gorge Trail when possible*
6. *City to rent Port-a-Johns for trailheads*
7. *KNSC to offer brush cutting assistance on existing trails*
8. *City to continue to work with land owners to secure appropriate trail use permissions*
9. *City and KNSC to assist property owners in bridge construction and gating control*



The City of Hancock recreation budget varies by year. The current budget for 2009-2010 shows nearly \$33,500 for parks operations, \$55,600 for the campground, \$16,600 for the Hancock Beach, nearly \$9,200 for the Ski Trails, and \$8,800 for the skating rink. The Hancock City Council allocates funds as needed for operations and capital improvements.

### **Part 3: RECREATION INVENTORY**

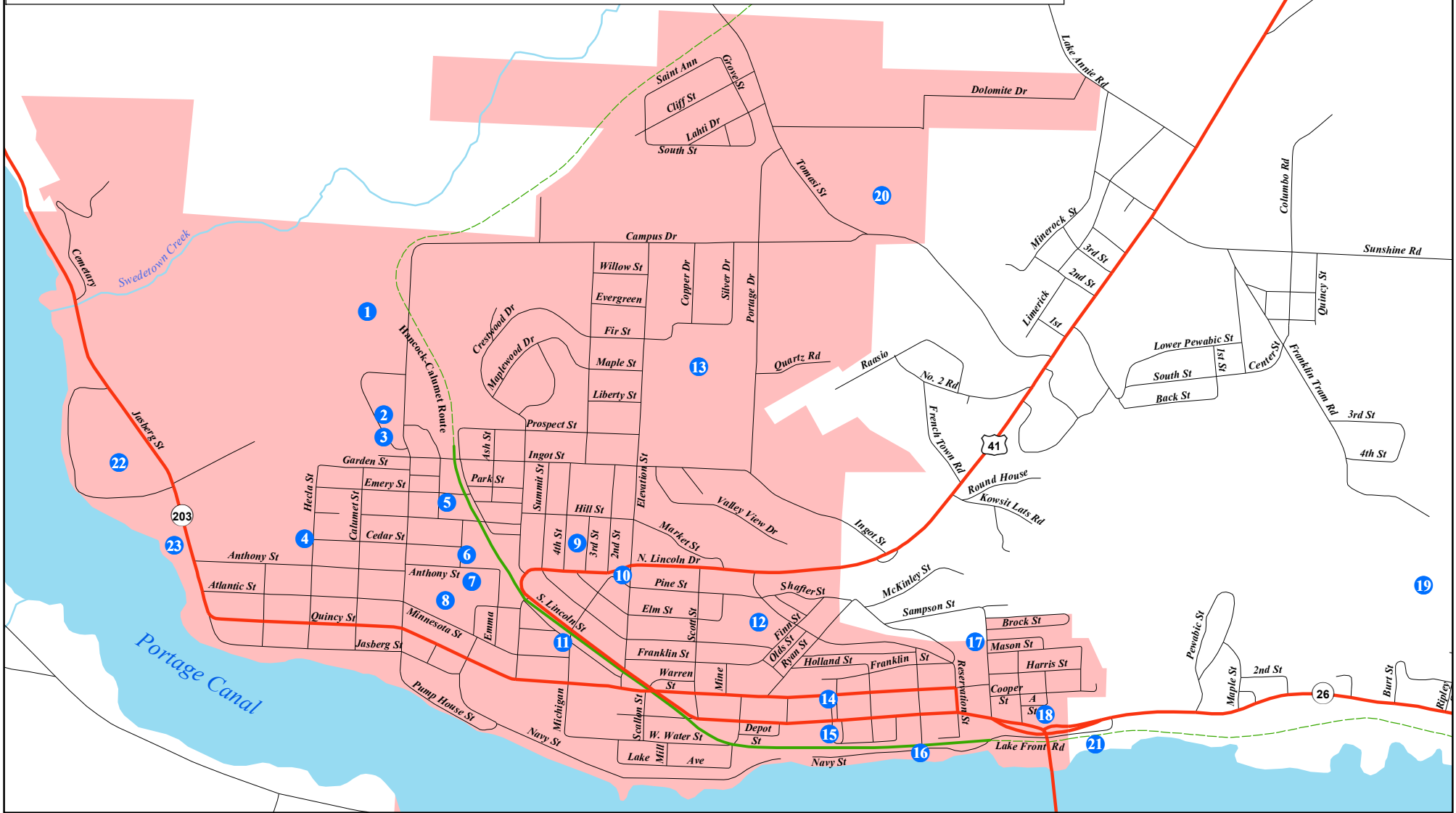
The City of Hancock maintains access to a number of recreation facilities for both local residents and tourists. The following recreation inventory describes the types and location (See Figure 3) of recreation facilities currently available in the City and nearby. In addition, accessibility assessments and rankings are provided for each site based on the parameters outlined in the “DNRE Guidelines for the Development of Community Park, Recreation, Open Space, and Greenway Plans” as follows:

- 1=none of the facilities/park areas meet accessibility guidelines
- 2=some of the facilities/park areas meet accessibility guidelines
- 3=most of the facilities/park areas meet accessibility guidelines

Based on this inventory the need for improvements and additional recreational facilities can be fully evaluated. The map in Figure 3 identifies the locations of City of Hancock’s recreation sites.

**Recreation Sites**

- |                         |                                 |                              |                               |
|-------------------------|---------------------------------|------------------------------|-------------------------------|
| 1 Maasto Hiihto Trails  | 6 Condon Baseball Field         | 12 Paavo Nurmi Center        | 18 East Hancock Stairway Park |
| 2 Driving Park          | 7 Condon Football & Track Field | 13 Hancock Elementary School | 19 Mont Ripley                |
| 3 Houghton County Arena | 8 Condon Park                   | 14 Memorial Park             | 20 Hancock Middle/High School |
| 4 I.S.D. Playground     | 9 Third Street Park             | 15 Montezuma Park            | 21 Houghton County Marina     |
| 5 Laurn Grove Park      | 10 Pine Park                    | 16 Porvoo Park               | 22 Hancock Campground         |
|                         | 11 Ryan School                  | 17 Terrace Park              | 23 Hancock Beach              |



Recreation Sites	Highway	Lakes
City Limits	Road	Rivers
Paved DNRE Trail	Bike Path / Snowmobile Trail	

**Figure 3** **City of Hancock**  
Recreation Sites

 	Created by: WUPPDR
	Source: ESRI, MI CGI.
	Date: June 2010

**City of Hancock Recreation Facility Inventory (see Figure 3):**

**1. Maasto Hiihto Trails**—Community multi-use recreation trails (skiing, biking, walking) on mostly private land maintained for winter use by the City in partnership with the Keweenaw Nordic Ski Club through annual agreements with



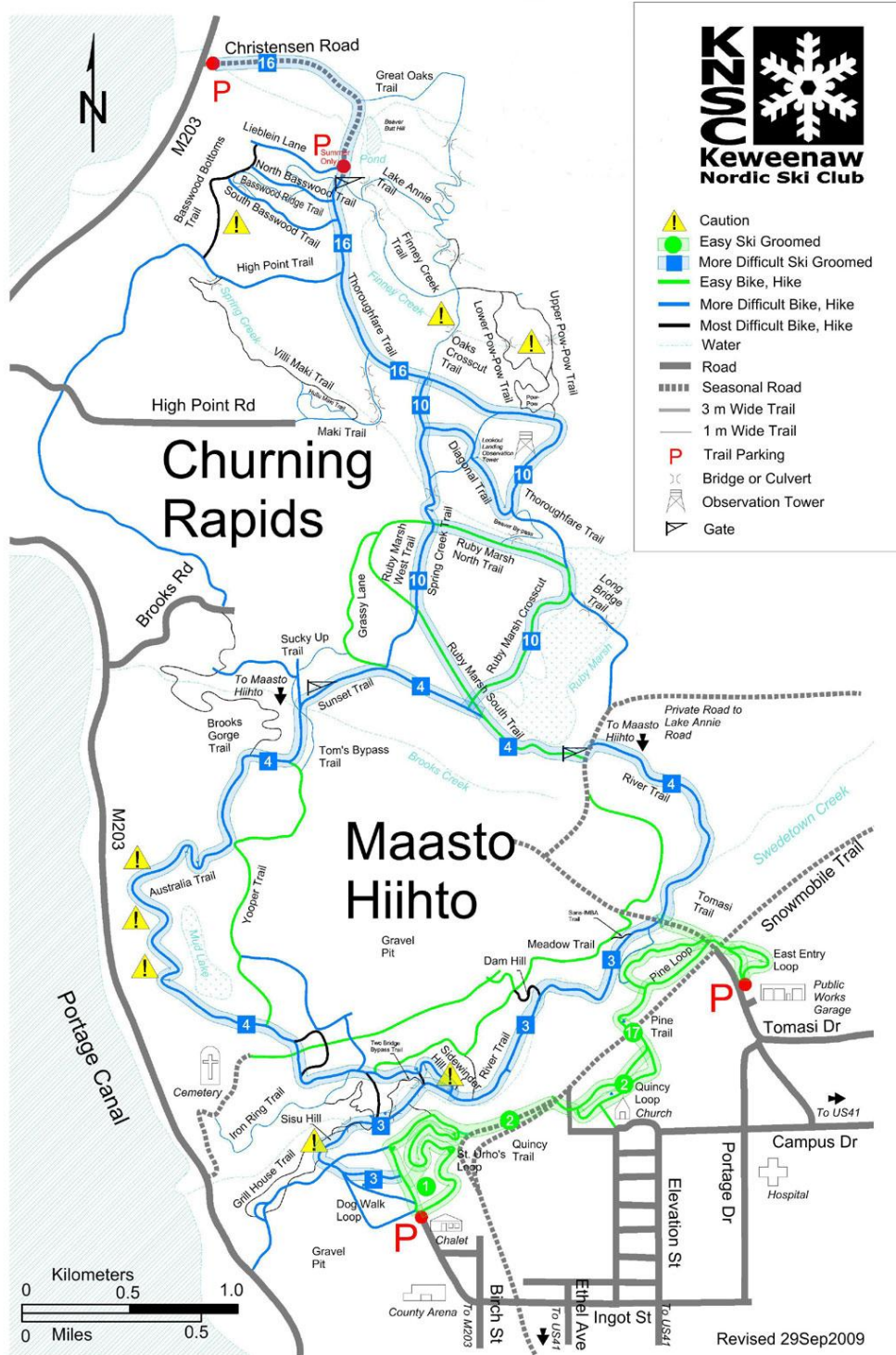
land owners. Trails are accessible from Driving Park and Tomasi Road trailheads and connect to the Churning Rapids Trails (located on private land protected by conservation easements). The number of groomed kilometers varies each season, but include approximately 26 kilometers. A map of the trail system is located in Figure 4. Accessibility assessment=1.

**2. Driving Park** – Community park owned by the City/ Houghton County composed of 16.3 acres including regulation baseball and softball diamonds, youth baseball field, multi-purpose building/ski chalet, parking area, equipment storage, Houghton County Ice Arena, fairgrounds and 4H building. Accessibility assessment=3.

**3. Houghton County Arena** – County owned multi-purpose facility located in Hancock that serves a large number of county residents through various programs and services. The Arena is used for a variety of activities throughout the year. It serves as the primary practice and



Figure 4: Maasto Hiihto Ski Trail Map



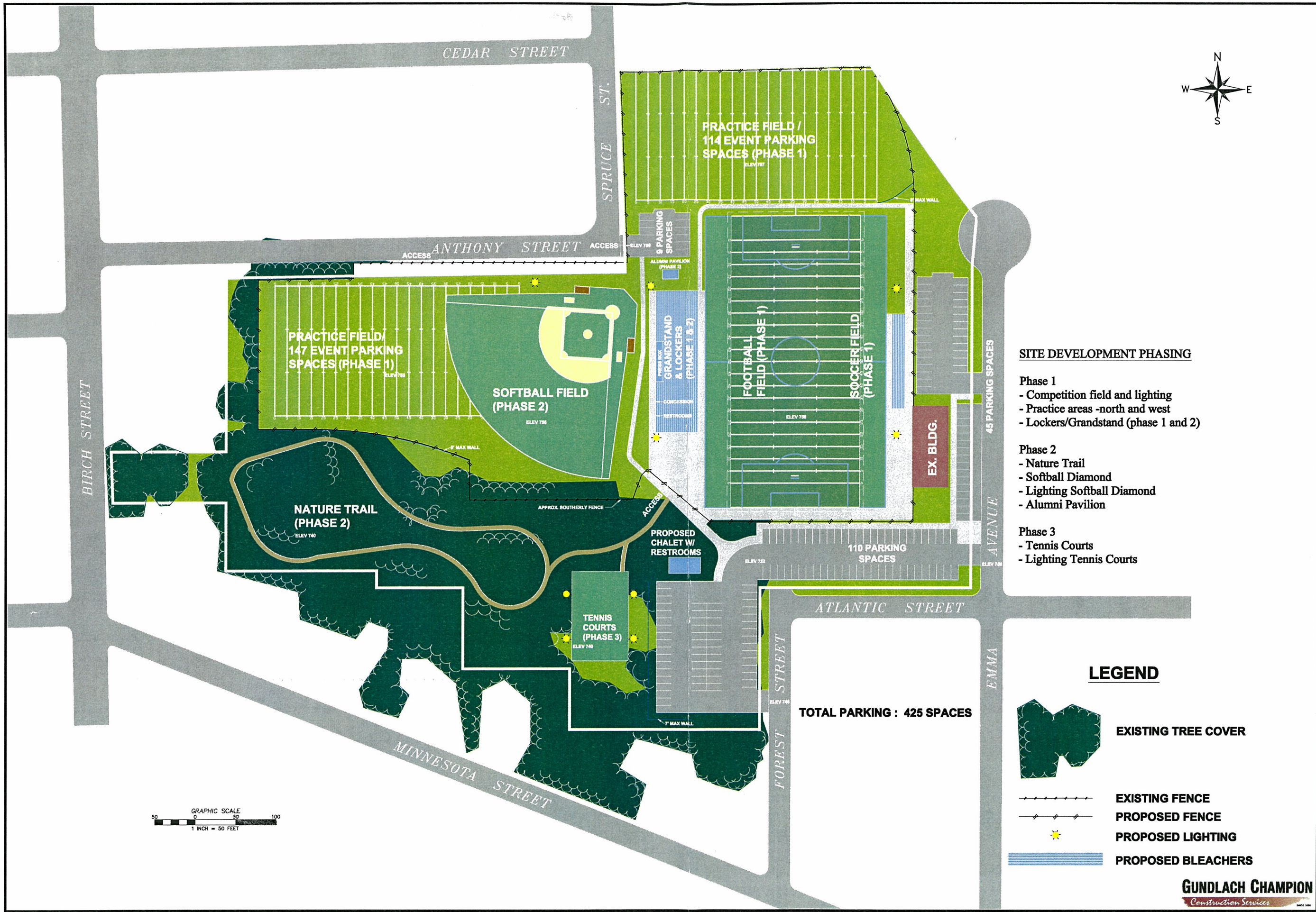
game facility for over 600 junior hockey players including senior and high school teams. Figure skating and public skating for youth and senior citizens are also scheduled at the facility. Ice is maintained at the facility for six (6) months of the year and it is one of only three managed ice rinks available in the Houghton/Hancock area. The grounds are used extensively for 4-H, the County Fair, a rest station for the adjacent Maasto Hiihto ski trails, and other recreational and community programs. Accessibility assessment=2.

**4. Intermediate School District (I.S.D) Playground**—School owned neighborhood park, .3 acres with playground and basketball court. Accessibility assessment=3.

**5. Lurn Grove Park**—City owned neighborhood park on 1.3 acres with skating rink/basketball court, updated tennis court, warming shelter and playground equipment. Accessibility assessment=3.



**6.—8. Condon Park Complex**—Finlandia Univeristy recently took ownership of this site from the City of Hancock. An 11.4 acre park with football field, small softball diamond, running track and track and field stations, two tennis courts, bleachers, weight room, locker rooms and concession stand. Finlandia is currently redesigning and renovating the site to include a competition football and soccer field, practice areas, new grandstand, lockers, softball diamond with lighting, nature trail, alumni pavilion, and lighted tennis courts. Figure 5 shows a site plan of the new facility. Current accessibility assessment=2; future accessibility anticipated=3.



**SITE PLAN  
OPTION C**

**CONDON FIELD MASTER PLAN  
FINLANDIA UNIVERSITY / HANCOCK PUBLIC SCHOOLS**

**SITE DEVELOPMENT PHASING**

- Phase 1**
- Competition field and lighting
  - Practice areas -north and west
  - Lockers/Grandstand (phase 1 and 2)
- Phase 2**
- Nature Trail
  - Softball Diamond
  - Lighting Softball Diamond
  - Alumni Pavilion
- Phase 3**
- Tennis Courts
  - Lighting Tennis Courts

**LEGEND**

- EXISTING TREE COVER
- EXISTING FENCE
- PROPOSED FENCE
- PROPOSED LIGHTING
- PROPOSED BLEACHERS

**TOTAL PARKING : 425 SPACES**

**GUNDLACH CHAMPION**  
Construction Services

46479 US 41  
Hancock, MI 49831-0008  
908.482.6433  
908.482.6433 FAX  
mailto:mail@hitch-onm.com

**hitch**  
division of OHM

APPROVAL	
DESIGN BY:	
DESIGN NO.:	
FINAL REVISION:	
SCALE:	
SCALE 1" = 50'	
DATE:	1/28/2008
PROJECT NO.:	7221-08-0080
SHEET NO.:	1
FBK NO.:	

© 2008 OHM INC. ALL RIGHTS RESERVED AND WITHOUT WARRANTIES EXPRESS OR IMPLIED, THE DESIGN AND INFORMATION HEREIN IS THE PROPERTY OF OHM INC. AND THE SAME MAY NOT BE REPRODUCED, REPRINTED, OR OTHERWISE USED WITHOUT THE WRITTEN CONSENT OF OHM INC.

**9. Third Street Park**—City owned neighborhood park, .5 acres with playground equipment, outdoor basketball court and covered picnic table. Accessibility assessment=3.



**10. Pine Park**—City owned neighborhood park, .45 acres with playground structure, park benches, and perennial flower beds. Accessibility assessment=3.

**11. Ryan School**—Run by Baraga-Houghton-Keweenaw Child Development Board as a child center. The park includes playground equipment. Accessibility assessment=2.

**12. Paavo Nurmi Center**—Owned by Finlandia University, indoor private facilities including swimming pool, four lane bowling alley, gymnasium, and weight room. Accessibility assessment=3.

**13. Hancock Elementary School** – School owned facilities including 20 acres with two (2) playgrounds, outdoor basketball courts, soccer fields, small pavilion, and gymnasium. Accessibility assessment=3.



**14. Memorial Park**—City owned neighborhood park of .1 acres with Veteran’s Memorial Monument, flower gardens, benches and tables. Accessibility assessment=3.

**15. Montezuma Park**—City owned neighborhood park, 1 acre with flower gardens and playground equipment. In the past it served as the location for the Tori, an area Farmers’ Market. Accessibility assessment=3.



**16. Porvoo Park**—City owned waterfront community park, .3 acres with pavilion, stairways, waterfront boardwalk, fishing, restrooms, and picnicking. Park is accessible from paved pedestrian path. Accessibility assessment=3.

**17. Terrace Park**—City owned neighborhood park, 1.3 acres with tennis courts, playground, basketball court, sand volleyball court, outdoor playground equipment, and ball field. Accessibility assessment=3.





**18. East Hancock Stairway Park**—City owned community park, .3 acres with benches and landscaping, overlooking Portage Bridge with historic WPA-era stairway to East Hancock. Accessibility assessment=1.

**19. Mont Ripley** - A ski hill operated by Michigan Technological University located just outside the City of Hancock east of the Portage Lake Lift Bridge. It is open during the winter season, and offers a complete rental shop and skiing and snowboarding lessons. High tech snow machines supplement the 20 feet of natural snow Mont Ripley receives each year. Mont Ripley hosts a racing league for adults as well as ski and snowboard bordercross racing, and is home to various school-based ski teams. A National Ski Patrol provides first-aid and other services when needed. Accessibility assessment=2.

**20. Hancock Middle/High School** - School owned facilities with playground, football field, regulation soccer field, basketball courts, two gyms and a nature trail. Accessibility assessment=3.

**21. Houghton County Marina** - County owned marina located just outside the City of Hancock east of the Portage Lake Lift Bridge. The marina is full service offering 54 slips, gas/diesel fuel, transient slips, pump-out station, picnic facilities for boaters, ice cooler and nautical charts.

**22. Hancock Campground** - City owned campground of 19 acres with campground area, boat launch,



water, showers, toilets, laundry, electricity, sanitary disposal and 71 sites—56 with electricity and 15 tent sites. Accessibility assessment=2.

**23. Hancock Beach** – City owned community park, 10 acres with picnic area, bathing beach, boardwalk, concession building, toilets, playground equipment, change house, parking area, pavilion, first aid room and change house, swimming dock, volleyball courts (3), and horseshoe pits (2). Accessibility assessment=3.



**Bike Path/Snowmobile Trail** – Paved DNRE trail from Portage Lake Lift Bridge to just north of Ingot Street. Portions of the trail are parallel paved and gravel segments to provide for motorized and non-motorized traffic. Trail connects to greater Keweenaw unpaved trail system. Accessibility assessment=2.

## Other Facilities

There are a number of regional recreation facilities around the Hancock/Houghton area that provide opportunities to residents and visitors including:

**Michigan Tech Student Development Complex** – Opened on September 2, 1980, this 235,000 square-foot Michigan Technological University recreational complex features an ice arena, multipurpose room, pool, gymnasium, fitness center, racquetball/squash courts, dance room, and a music room.



**McLain State Park** – Located along M-203 north of Hancock on Lake Superior, this State Park is a popular destination for visitors and locals. Activities at the park include swimming, beachcombing, rock hounding, sightseeing, hiking, skiing and camping. There are 103 modern campsites and a few rustic cabins available.



**Beaches** – Several sandy beaches are accessible to the public and provide opportunities for swimming and sunbathing. Nearby beaches include: Houghton Waterfront Park, McLain State Park and Chassell Township Waterfront Park.

**Trails** –The region hosts a network of snowmobile/multipurpose trails that complement Hancock’s offerings including the Jack Steven’s Rail-Trail from Hancock to Calumet, the snowmobile trail from Hancock to Lake Linden, the Chassell-Houghton Rail-Trail, MTU Ski Trails and the Swedetown Trails in Calumet. Opportunities for these trails provide motorized and non-motorized activities such as biking, cross-country skiing, hiking, snowshoeing, skijoring, ATV and snowmobiling.

**Playgrounds** – Small playgrounds and ballparks are scattered throughout Houghton County.

**Various** – Outside of Houghton County are numerous facilities that allow for any number of recreational pursuits, most notably Isle Royale National Park (Houghton hosts the park headquarters), Porcupine Mountain State Park, Ottawa National Forest, and Fort Wilkins State Park.

The western Upper Peninsula also has countless sites offering more passive recreational opportunities such as the Keweenaw National Historical Park, museums, mine tours and scenic drives.

**Part 4: RECREATION GOALS**

The City of Hancock has identified a number of goals for recreation within the community. The following are goals to be accomplished by the City of Hancock Recreation Plan:

- To provide recreational facilities, programs and opportunities to sufficiently meet the recreational needs of all residents of the City of Hancock and its visitors.
- To conserve land and water resources within the City for future generations including preservation of open space and improving public access to the waterfront.
- To improve boardwalks and docks along water to increase access to the City for watercraft users.
- To spend limited recreational funds efficiently as possible.
- To provide access to all recreational facilities for handicapped citizens and visitors.
- To continue developing a network of non-motorized pathways to serve the community during all four seasons.

**Part 5: RECREATION NEEDS - BASIS FOR ACTION PROGRAM**

The City of Hancock is active in pursuing recreational goals as improvements are ongoing, shown through completed capital improvement activities since 2000.

**Table 2: Completed Recreation Projects since 2000—City of Hancock**

<b>Project</b>	<b>Cost</b>	<b>Funding Source</b>
Complete DNRE Trail paving to bridge	\$70,000	State funds
Pine Park Development	\$18,000	MSHDA
Driving Park - Rehabilitate backstops (lower section)	\$8,000	Local funds
Driving Park - Construct restrooms/chalet facility	\$ 90,000	MNRTF
Laurin Grove- Construct new play structure	\$6,000	Hancock Rotary

<b>Project</b>	<b>Cost</b>	<b>Funding Source</b>
Porvoo Park Phase IV- transient docking, launch ramp, boardwalk	\$150,000	MDNRE/CZM
Campground - Re-roof restroom	\$5,000	Local funds
Waterfront - Construct fishing access dock	\$50,000	MNRTF
Campground - Replace registration building	\$10,000	State funds
Maasto Hiihto - Construct new chalet at trailhead	\$100,000	State funds
Laur Grove - Rehab exterior of warming shed	\$10,000	Hancock Rotary
Laur Grove - Resurface tennis court	\$13,000	Hancock Rotary/City
Hancock Beach - Paint all buildings	\$10,000	City
Maasto Hiihto - purchase new snowmobile	\$10,000	City/KNSC
Maasto Hiihto - expand Tomasi Trailhead parking area	\$20,000	City
Hancock Beach - Install new irrigation system	\$50,000	City
Driving park - Install scoreboard	\$30,000	Local
Terrace Park - some playground equipment	\$5,000	City/Local
Maasto Hiihto - utility ATV purchase	\$9,000	City/KNSC

In order to determine the current needs for recreational opportunities in the City, several key elements were analyzed to formulate an action plan including: a review of the current recreation inventory as well as the needs of the community through a recreation survey. The recreation survey made available on the Internet and was open to anyone using City recreation sites although the majority of participants were City of Hancock residents. The survey generated response from 146 individuals. The survey, along with complete response, is presented in Appendix A.

A variety of recreation deficiencies and potential improvements were identified based on the survey results and from discussions with the Recreation Plan

Committee and City Manager. The following list identifies some of the current unmet needs at the City recreation facilities:

- Parking lot not paved at beach;
- Campground showers are not ADA accessible;
- Upgrades needed for the Maasto Hiihto Trail facilities and operations; and
- Develop agreements with land owners for use of Maasto Hiihto Trail system in non-winter months.

## **Part 6: CAPITAL IMPROVEMENT PLAN**

The capital improvement plan provides for the identified needs which are most evident at the present time and for which developing trends indicate an imminent need. Also, the plan addresses ADA deficiencies that still need to be met according to a 1995 study by Hitch, Inc. The improvement plan is not intended to be all inclusive, but used rather as a guide for recreation development. This recreation plan should remain somewhat flexible to account for changing lifestyles, increased leisure time and new ideas so that it will always be consistent with contemporary needs and strive to provide the best overall recreation opportunities available for the City of Hancock residents and visitors.

The following table lists future projects prioritized by year to meet the recreation goals and needs of the City. The Recreation Plan Committee prioritized the projects based on results from the survey and on ideas from the Recreation Commission and community.

**Table 3: 5-Year Capital Improvement Plan**

Priority	Year	Project	Cost	Funding Source
	<b>2011</b>			
1		Beach- Pave parking lot and storm water improvements	\$240,000	GLRI
2		Disc golf course construction	\$5,000	City
3		Beach—add new playground equipment	\$80,000	City/Rotary
4		Third Street Park—add new playground equipment	\$20,000	City
5		Maasto Hiihto—Bridge Improvements	\$3,500	KNSC/City
	<b>2012</b>			
6		DNRE Trail—pave Prospect St. north and add fitness stations along entire length of trail	\$125,000	MDNRE
7		Campground—rehab shower/restrooms to ADA standards	\$40,000	City
8		DNRE Trail—pave trail section behind Coon Electric east of Tezcucco St.	\$10,000	City/MDNRE
9		Laurn Grove—install new boards at ice rink	\$60,000	City/Local
10		Montezuma Park—add new playground equipment	\$20,000	City
	<b>2013</b>			
11		Boardwalk—construct shoreline walkway to/from Ramada Inn & bridge	\$240,000	MNRTF/CZM
12		Throughout City—install bicycle signage	\$4,000	City
13		Terrace Park—purchase new playground equipment	\$15,000	City/Sponsor
14		Campground—continue to upgrade electrical service at sites	\$80,000	City



Priority	Year	Project	Cost	Funding Source
15		Crestwood & Poplar Streets—install a gazebo on the old water tower base	\$10,000	City
	<b>2014</b>			
16		DNRE Trail—pave trail from Hancock to Lake Linden	Unknown	MDNRE
17		Maasto Hiihto—work on getting permissions to use trails year round	Unknown	City/KNSC
18		Beach—reconstruct dock	\$120,000	CZM
19		Campground—construct new playground equipment	\$20,000	City
20		Terrace Park—upgrade tennis court and install second court	Unknown	City/Local
21		DNRE Trail—install two (2) staircases from trail to waterfront near Montezuma Park and Jutila Center	\$80,000	City
	<b>2015</b>			
22		Maasto Hiihto—purchase new grooming snowmobile	\$12,000	City/KNSC
23		Maasto Hiihto—secure easement for access to Churning Rapids	Unknown	City/KNSC
24		Campground—expand boat launch and install transient boat slips/finger piers	Unknown	BIG/CZM
25		Laurin Grove—construct roof on ice rink	\$340,000	MNRTF/City
26		Swedetown Creek—acquire new land	\$1,000,000	MNRTF/Local

**Sources of Funding**

A number of possible sources of funding for recreation projects within the City of Hancock are available and include the following:

**Table 4: Possible Funding Sources**

Description	Match	Source
Local Funds	—	City
Community Foundation/Other (local service organizations and businesses)	—	Local
Keweenaw Nordic Ski Club (KNSC)	—	KNSC
Great Lakes Restoration Initiative	—	GLRI
Michigan Natural Resources Trust Fund (MNRTF)	75/25 grant	DNRE
Land & Water Conservation Fund (LWCF)	50/50 grant	DNRE
Boating Infrastructure Grants (BIG)	75/25 grant	DNRE
Off Road Vehicle (ORV)/Snowmobile Grants	—	DNRE
Coastal Zone Management (CZM)	50/50 grant	DNRE
Miscellaneous Grants	—	Unknown

**Part 7: DESCRIPTION OF PLANNING PROCESS**

A Recreation Plan Committee was formed to review recreation goals and objectives and make project recommendations for the Recreation Plan. Members of the committee included Glenn Anderson—City Manager; Dennis Hagenbuch—Recreation Commission Chairman; John Slivon—City Council Member; and Kevin Kline—Recreation Commission member. In February, 2010 the Recreation Plan Committee held a meeting to review materials and develop survey questions for a print and on-line survey. The on-line survey was posted on both the City of Hancock

website and Western U.P. Planning & Development Region’s website, while paper copies of the survey were available at City Hall. The survey period ran for six weeks from mid-March, 2010 to end of April, 2010 and had 146 respondents (survey and results are found in Appendix A). The Recreation Plan Committee met in June, 2010 to review the survey results and identified and prioritized projects into a five-year capital improvement schedule. In July, 2010 the full Recreation Commission met to review the five-year capital improvement schedule and make amendments. Later that same month a draft of the Plan was distributed to the Recreation Commission, Planning Commission, City Manager, and City Council for review before it was shared with the public.



At a regularly scheduled City Council meeting on September 15, 2010 it was announced that a draft of the City of Hancock 5-year Recreation Plan was available for public review and inspection for 30 days.    comments were received during this period. Copies of the plan were made available on-line at [www.cityofhancock.org](http://www.cityofhancock.org) and at [www.wupldr.org](http://www.wupldr.org), while print copies were made available at Hancock City Hall. A Public Hearing, held on October 20, 2010, allowed citizens the opportunity to review and comment on the new City of Hancock 5-Year Recreation Plan.    comments were received. The 2011-2015 City of Hancock 5-Year Recreation Plan was adopted at the subsequent regularly scheduled City Council meeting held on October 20, 2010.

All notices of hearings were publicized to invite citizen comment and review of the new recreation plan. The City Council Resolution of Adoption, meeting notices and minutes are included as Appendix B.

DRAFT

## **Appendix A: SURVEYS AND RESULTS**

1. Recreation Survey/Results
2. Bicycle Survey/Results
3. Walking Survey/Results

DRAFT



www.s

## Report: Copy of Response Summary Report

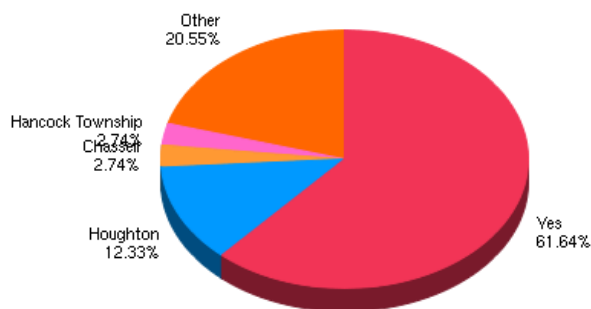
Survey: City of Hancock Recreation Plan Survey

Compiled: 05/03/2010

Filter Start: 03/01/2010

Filter End: 05/03/2010

### 1. Are you a City of Hancock Resident? If no, where do you reside.



#### SUMMARY

VALUE	COUNT	PERCENT %
Yes	90	61.64%
Houghton	18	12.33%
Chassell	4	2.74%
Hancock Township	4	2.74%
calumet	3	2.05%
Duluth	2	1.37%
	2	

Lake Linden		1.37%
Stanton Twp	2	1.37%
Allouez Township	1	0.68%
Appleton, WI	1	0.68%
Atlantic Mine, MI	1	0.68%
Durand-was Hancock until Sept	1	0.68%
Franklin Township/Calumet	1	0.68%
Franklin Twp	1	0.68%
Green Bay	1	0.68%
Hancock	1	0.68%
Houghton, MI	1	0.68%
Hubbell	1	0.68%
Laurium	1	0.68%
M203 between Hancock and McLain	1	0.68%
Mason	1	0.68%
Portage Township	1	0.68%
Quincy Hill	1	0.68%
Quincy Township	1	0.68%
Quincy Township just outside city of Hancock	1	0.68%

Ripley	STATISTIC	0.68%
Stanton Township	Choices Selected:	146 0.68%
Tamarack City	Total Responses:	144 1 0.68%
TEchnically just outside of city on McKinley St.		1 0.68%

Report from [www.SurveyGizmo.com](http://www.SurveyGizmo.com)



## 2. Number of persons in your household ages:

### 0-5 YEARS OLD ( 0.85 ON AVERAGE)

Values	Count	Percent
1	13	48.15%
0	9	33.33%
2	5	18.52%

### 6-12 YEARS OLD ( 0.80 ON AVERAGE)

Values	Count	Percent
1	12	48.00%
0	9	36.00%
2	4	16.00%

### 13-19 YEARS OLD ( 1.08 ON AVERAGE)

Values	Count	Percent
0	9	34.62%
1	8	30.77%
2	7	26.92%
3	2	7.69%

### 20-39 YEARS OLD ( 1.80 ON AVERAGE)

Values	Count	Percent
2	44	55.00%
1	24	30.00%

3	8	10.00%
0	2	2.50%
4	2	2.50%

**40-65 YEARS OLD ( 1.55 ON AVERAGE)**

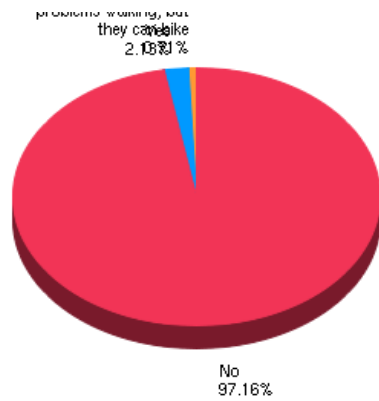
Values	Count	Percent
2	49	61.25%
1	23	28.75%
0	6	7.50%
3	1	1.25%
one	1	1.25%

**66+ ( 0.77 ON AVERAGE)**

Values	Count	Percent
0	6	46.15%
2	4	30.77%
1	2	15.38%
two, both retired	1	7.69%

**Total Responses: 144**

**3. Does anyone in your household have a disability or require specialized recreation? If yes, please specify:**



**STATISTICS**

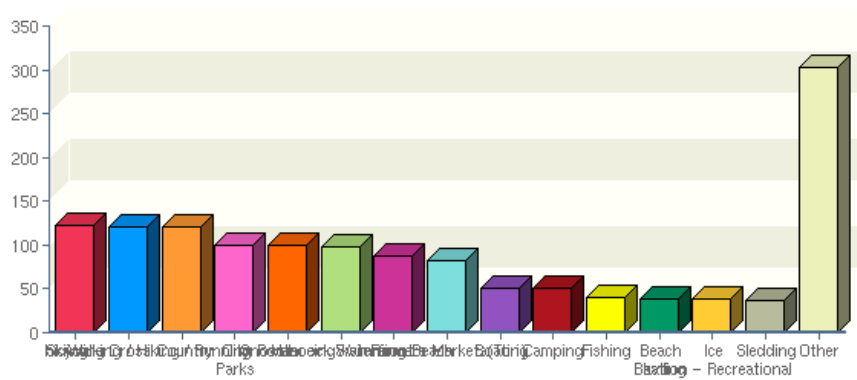
Choices Selected:	141
Total Responses:	141

**SUMMARY**

VALUE	COUNT	PERCENT %
No	137	97.16%
Yes	3	2.13%
Two people have knee problems and have problems walking, but they can bike	1	0.71%

Report from [www.SurveyGizmo.com](http://www.SurveyGizmo.com)

**4. Does anyone in your household attend/use any of the following(check all that apply)**



**SUMMARY**

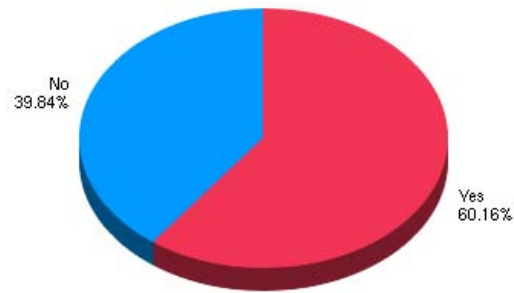
VALUE	COUNT	PERCENT %
bicycling	122	85.92%
Skiing - Cross Country	120	84.51%
Walking / Hiking / Running Route	120	84.51%
City Parks	99	69.72%
Snowshoeing	99	69.72%
Hancock Waterfront	98	69.01%
Swimming Beach	88	61.97%
Farmers Markets(Tori)	82	57.75%
Boating	50	35.21%
Camping	50	35.21%
	41	

Fishing		28.87%
Beach Pavilion	39	27.46%
Ice Skating - Recreational	38	26.76%
Sledding	37	26.06%
City Playgrounds	34	23.94%
Porvoo Park	28	19.72%
Ball Fields - soccer	27	19.01%
Finlandia Pool	27	19.01%
ATV Trails	24	16.90%
Ice Arena	23	16.20%
Hockey - adult	19	13.38%
Laurn Grove Ice Rink	19	13.38%
Volleyball - beach	19	13.38%
Dances	18	12.68%
Ball Fields - softball	11	7.75%
Ball Fields - baseball	9	6.34%
Ball Fields - little league	9	6.34%
Horse shoes	7	4.93%
Hockey - youth	6	4.23%

	STATISTICS	
Horse Shows	4	2.23%
kayaking	2	1.41%
Basketball and tennis courts	1	0.70%
bike riding Maasto trails	1	0.70%
dog walks /canoeing	1	0.70%
fix other two tennis courts east hancock and especially down by condon field very nice area	1	0.70%
Maasto Hiihto chalet and trails	1	0.70%
Mountain biking	1	0.70%
mountain biking, trail running	1	0.70%
Rail trail to Calumet	1	0.70%
Railroad grade to Dollar Bay (biking)	1	0.70%
scenic view areas	1	0.70%
Swedetown Gorge trails	1	0.70%
Swedetown Park - birdwatching	1	0.70%
tennis	1	0.70%
Terrace park - basketball	1	0.70%

Report from www.SurveyGizmo.com

**5. Should the city develop a disc (Frisbee) golf course?**



**STATISTICS**

Choices Selected:	128
Total Responses:	128

**SUMMARY**

VALUE	COUNT	PERCENT %
Yes	77	60.16%
No	51	39.84%

Report from [www.SurveyGizmo.com](http://www.SurveyGizmo.com)

**6. Please rank each project at the *Hancock Recreation Area Beach & Campground* with a priority status. ()**

ITEM	Highest Priority	High Priority	Neutral	Low Priority	Lowest Priority	Total
Pave Beach parking lot and install storm water improvements	8.6% 11	22.7% 29	38.3% 49	16.4% 21	14.1% 18	128
Add new playground equipment at beach	8.6% 11	22.7% 29	49.2% 63	12.5% 16	7.0% 9	128
Reconstruct dock at beach	10.2% 13	33.1% 42	37.8% 48	10.2% 13	8.7% 11	127
Install new irrigation system at beach	2.4% 3	11.9% 15	48.4% 61	19.8% 25	17.5% 22	126
Construct second pavilion at beach	5.5% 7	14.2% 18	43.3% 55	18.1% 23	18.9% 24	127
Rehab shower/restrooms to ADA standards at campground	14.2% 18	32.3% 41	39.4% 50	9.4% 12	4.7% 6	127
Construct new playground equipment at campground	5.5% 7	14.2% 18	53.5% 68	16.5% 21	10.2% 13	127
Upgrade electrical service sites in campground	2.4% 3	15.2% 19	43.2% 54	18.4% 23	20.8% 26	125
<b>Average %:</b>	<b>7.2%</b>	<b>20.8%</b>	<b>44.1%</b>	<b>15.2%</b>	<b>12.7%</b>	<b>1015</b>

Total Responses: 131



**7. Do you have other projects you wish to see at Hancock Recreation Area Beach & Campground?**



**SUMMARY**

VALUE	COUNT	PERCENT %
none	2	6.67%
A stage for outdoor performances in the summer	1	3.33%
Add a faucet for foot washing near the changing rooms.	1	3.33%
add recycling	1	3.33%
Are there recycling bins at beach?, Control stormwater runoff in parking lot w/o paving it. Maybe use durable, porous surface	1	3.33%
Boat docks	1	3.33%
Concert Bell for Outdoor Summer Concer Series	1	3.33%
Create an access trail to Swedetown Creek and Maasto Hiito Trails	1	3.33%
Create flat spot for picnic tables & better grass areas	1	3.33%
create flat spots for picnic tables & developpe better grass areas	1	3.33%
	1	

Do not attend often enough to comment		3.33%
get someone to run concession stand again	1	3.33%
Increase promotion and marketing for Campground and Beach facilities	1	3.33%
Just keep the current grounds well maintained	1	3.33%
keep the "big RV" spots w/ high utility needs away from the waterfront. Charge these big units appropriate fees. Keep fees for "regular people" (tents and small units) low so locals can enjoy this beautiful resource.	1	3.33%
lifeguard on duty	1	3.33%
Make it safer to access by bicycle, install more bike racks.	1	3.33%
No	1	3.33%
Paving the parking lot is a very low priority but the storm water improvements are very important to protect Portage Lake.	1	3.33%
Provide level picnic spots with tables and grills in the shaded areas.	1	3.33%
Recycling, Compost, Greywater used for landscaping/irrigation	1	3.33%
Rowing Boathouse?	1	3.33%
sewer system up to code/standards? install more shade trees around playground	1	3.33%
should remain relatively undeveloped	1	3.33%
Swings! Remember that adults like to swing.	1	3.33%
We go to the park for picnics so a good bathroom and picnic tables are all that we use.	1	3.33%
wireless	1	3.33%
xx	1	3.33%

You may not have money to do both playgrounds but if you made the beach playground really great, more kids would use it and the camping kids could still benefit by walking a short distance to it, right?

STATISTICS

1	3.33%
Choices Selected:	30
Total Responses:	30

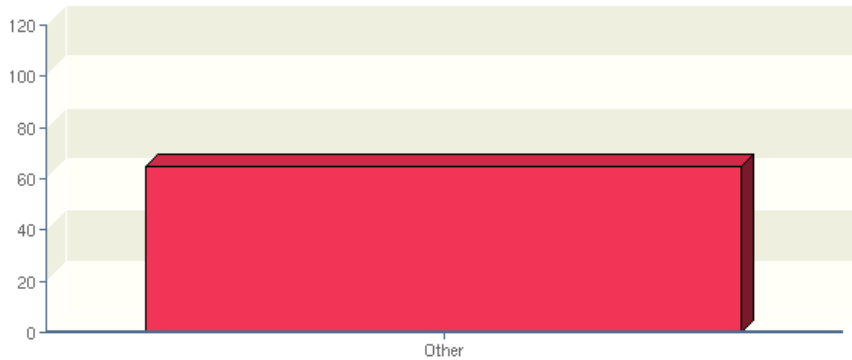
Report from [www.SurveyGizmo.com](http://www.SurveyGizmo.com)

**8. Please rank each project at *Maasto Hiihto Trails* with a priority status. ( )**

ITEM	Highest Priority	High Priority	Neutral	Low Priority	Lowest Priority	Total
Expand Tomasi Trail head parking area	15.4% 20	35.4% 46	36.9% 48	9.2% 12	3.1% 4	130
Purchase new snowmobile from grooming	24.6% 32	33.8% 44	26.2% 34	6.9% 9	8.5% 11	130
<b>Average %:</b>	<b>20.0%</b>	<b>34.6%</b>	<b>31.5%</b>	<b>8.1%</b>	<b>5.8%</b>	<b>260</b>

Total Responses: 133

### 9. Do you have *other* projects you wish to see at *Maasto Hiihto Trails*.



#### SUMMARY

VALUE	COUNT	PERCENT %
acquire easements or land to ensure longterm sustainability of trail system	1	1.54%
Additional signage	1	1.54%
awesome trails!! be sure to have phone emergency numbers and trail address at trailheads.	1	1.54%
Ban motorized vehicles	1	1.54%
Better maps, sinage, like Tech Trails which is very easy to navigate	1	1.54%
Better signage for cyclists and other silent sports	1	1.54%
Better signage within trail system.	1	1.54%
better signage, enusre right of way for future generations, I personally would like to see railroad ravine reopened	1	1.54%
Better signage.	1	1.54%
better signs for XC ski / snowmobile season - it is a beautiful area, keep up the good work!	1	1.54%
	1	

City purchase all properties involving trails & manage responsibly		1.54%
Continue to obtain ownership of the Gorge and access to it. Expand trails on new parcel	1	1.54%
Continue to get control of the	1	1.54%
develop better ways of preventing motored vehicles from ruining the trails	1	1.54%
Disc Golf Course!!! The one at Tech is super busy all the time...	1	1.54%
Disc golf course, otherwise the current area is great!	1	1.54%
driving park xc skiing pavilion open more frequently for restrooms.	1	1.54%
enter formal agreement with land owners!!!!	1	1.54%
Expand single track mountain biking trails	1	1.54%
Expand trail network behind the DPW and across swedetown creek on new land.	1	1.54%
expand trails, specifically montain biking	1	1.54%
expand, add more trails!	1	1.54%
Expantion of trails	1	1.54%
Find a route that would not use Tomasi Road - perhaps use the new land the city purchased east of the road.	1	1.54%
find a way to keep ATV's from degrading trails-keep this trail ssystem for non-motorized!!!!	1	1.54%
Formal arrangement for public access of trails w/ landowners or purchase the property to specifically place in public trust for only quiet recreation.	1	1.54%
Gorge bridges need work - replace rotting boards, widen first bridge (even though it's not on the groomed trail, many people use it. It is too narrow. Gets very dangerous when snow is packed high)	1	1.54%
Groom for both classic and skate ski	1	1.54%

groom the trails for skate skiing. This area is beautiful for skating. Would bring in much tourist revenue.	1	1.54%
Groom them for skate skiing.	1	1.54%
i am not able to find my way; i get lost in summer and cannot walk on the trails without fear of getting lost; was also true in winter and have not been back	1	1.54%
I wish to see the Maasto trails be protected in perpetuity either through land purchase by the city of Hancock or through an easement - this is by far Hancock's best treasure, in my opinion	1	1.54%
Improve safety of bridges that cross Swedetown creek. Put in board walks in sensitive muddy areas.	1	1.54%
Improve signage, widen some trail areas, KEEP TRUCKS AND ATVS OFF	1	1.54%
Improved signage on trails	1	1.54%
Improved trail markers	1	1.54%
increase access at Houghton County Arena	1	1.54%
Leave more space for classic skiers who don't like to ski in tracks -- not for skating, but for more control on curves, hills, etc.	1	1.54%
maintain access for running and skiing. we lose more land every year to the quarry and development	1	1.54%
Make permanent formal arrangements with private landowners on the trail system for year-round non-motorized public recreation.	1	1.54%
more access points, maybe one near the apostolic church, work out arrangement to use their parking lot all but Sundays	1	1.54%
More obvious seperation between snowmobile/ATV trails and cross country ski/hike/bike trails	1	1.54%
More singletrack!	1	1.54%
Na	1	1.54%
Neutral	1	1.54%
	1	

New bridge at base of rail road ravine		1.54%
Open the trails to skate skiing.	1	1.54%
Please just keep it open for use and improve the bridges. Also move trails away from edge of water for water quality improvement!	1	1.54%
Provide Online Maps of Trails if Not Available	1	1.54%
Purchase the land where the trails are or obtain recreational or conservation easements to secure the future of the trail system	1	1.54%
RECONSTRUCT GORGE BRIDGES (perhaps use Calumet Natinal Guard units).	1	1.54%
Remediate trail/areas that have been degraded by ATVs and other ORVs	1	1.54%
renew signs	1	1.54%
repair bridges	1	1.54%
restrict motorized and wheeled access to wet areas, add a disc golf course	1	1.54%
Secure access to Swedetown Gorge through purchase or easements	1	1.54%
Secure long term access to existing trail network through means such as conservation easement.	1	1.54%
Secure written easments and purchase property as it becomes available.	1	1.54%
Signage for summer use.	1	1.54%
Some rest or picnic areas would be cool	1	1.54%
The biggest concern is landowner permission to continue to allow skiing (and summer use too). Another concern is the trails being abused by motorized vehicles. These are leaving many parts of the trails in terrible, sometimes unusable condition. These trails are a fantastic resource for the town and offer a kind of skiing not available at MTU or Calumet. A real treasure! I hope they can be maintained well into the future.	1	1.54%
The trailhead just needs more work to be more inviting.	1	1.54%



These trails are a real ASSET -- keep on with what you are doing!	<b>STATISTICS</b>	<b>1.54%</b>
	Choices Selected:	65
work w/landowners for permission to use for non-skiing use .	1	1.54%
	Total Responses:	65
your groomers need to do a better job. they do not need more equipment.	1	1.54%

Report from [www.SurveyGizmo.com](http://www.SurveyGizmo.com)

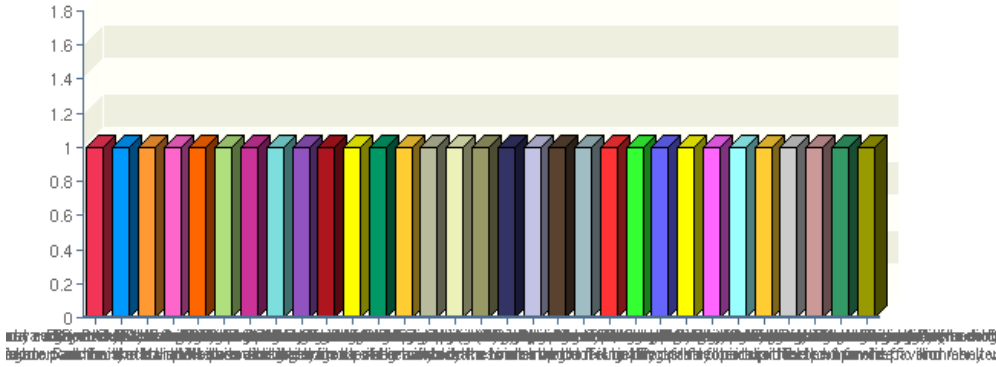
**10. Please rank each project at the *Hancock City Parks & other city recreational amenities.* ( )**

ITEM	Highest Priority	High Priority	Neutral	Low Priority	Lowest Priority	Total
Laurn Grove - construct roof on ice rink	5.6% 7	14.4% 18	50.4% 63	15.2% 19	14.4% 18	125
Montezuma Park - construct new gazebo	3.3% 4	9.0% 11	60.7% 74	17.2% 21	9.8% 12	122
Montezuma Park - add new playground equipment	3.3% 4	24.0% 29	54.5% 66	9.9% 12	8.3% 10	121
Terrace Park - construct new gazebo	-	8.2% 10	64.8% 79	15.6% 19	11.5% 14	122
Terrace Park - add new playground equipment	4.1% 5	16.5% 20	60.3% 73	9.1% 11	9.9% 12	121
Third Street Park - add new playground equipment	4.3% 5	19.7% 23	58.1% 68	8.5% 10	9.4% 11	117
Boardwalk - construct shoreline walkway to/from Ramada to bridge	25.0% 32	37.5% 48	21.1% 27	10.9% 14	5.5% 7	128
DNRE Trail - pave from Prospect St. north and add fitness	22.8%	32.3%	23.6%	10.2%	11.0%	127

stations	29	41	30	13	14	
DNRE Trail - pave the Hancock to Lake Linden portion	42.3% 55	24.6% 32	16.9% 22	6.9% 9	9.2% 12	130
Driving Park - install a scoreboard	0.8% 1	7.6% 9	55.5% 66	12.6% 15	23.5% 28	119
<b>Average %:</b>	<b>11.5%</b>	<b>19.6%</b>	<b>46.1%</b>	<b>11.6%</b>	<b>11.2%</b>	<b>1232</b>

Total Responses: 133

**11. Do you have other projects you wish to see at any of the *Hancock City Parks* and *other city recreational amenities*?**



**SUMMARY**

VALUE	COUNT	PERCENT %
A designated dog play area would be good at a park/trails for groups who have their dogs play together - this encourages more well-rounded dogs in our community. Marquette has a dog play group who meets in the winter at the Tourist Park since it is a protected from traffic and many walkers during that time of year.	1	3.23%
A linked biking trail between houghton and hancock that leads to the major areas of the cities	1	3.23%
a terrain/skate park for skaters and bikers would be nice	1	3.23%
Add bike racks at each park - particularly the Driving Park and Lourn Grove	1	3.23%
Again..new Disc Golf course would be great.	1	3.23%
anything to aid the use of bicycles to get around the town. As it is, many routes are really dangerous for bikes. I don't know how it can be done, but a route to and across the bridge would be fantastic.	1	3.23%
area for dogs? dog park in the works?	1	3.23%
Baseball fields at driving park need work. Infield highest priority	1	3.23%
Bike & walking trail signage	1	3.23%

Bike lanes from Hancock to Houghton.	1	3.23%
Concert Bell for Outdoor Summer Concer Series	1	3.23%
crushed limestone is good for biking trails, but not paving.	1	3.23%
Cut back tree line for better view access of Campground signage from South approach.	1	3.23%
Develop waterfront between Ramada and Poovo Park for public domain only and non commercial, boardwalk and boat piers or slips or more fishing and possibly a boat landing water access.	1	3.23%
Dog Park; Pedestrian/bike corridors; Ecological Landscaping (i.e. rain gardens, native plantings); Community Garden	1	3.23%
don't pave trails, just put in a harder surface, then we can jog and bike on them	1	3.23%
fix the 3rd tennis court down in the woods behind condon field, very nice area, shady	1	3.23%
I think paved biking trails would greatly add to tourism and local quality of life for individuals and families.	1	3.23%
I would like to see a permanent shelter at Montezuma Park for the tori. When it rains the current site is a muddy mess and the tent is getting pretty beat up. The permanent pavillion/shelter could also serve as a great place for live music in the summer.	1	3.23%
I would rather see trail to Lake Linden upgraded to porous hard pack rather than paved.	1	3.23%
Improved (safer) bicycling routes for recreation and commuting.	1	3.23%
Navy Street from the condos to, and including, Pumphouse Street, should be paved for biking/walking only (no motorized traffic)	1	3.23%
no	1	3.23%
Parking at Montezuma Park	1	3.23%
Preserve the entire mouth of the Swedetown Creek as a park.	1	3.23%
protect Swedetown Creek, regain access from Driving Park	1	3.23%

Restroom facilities at the highest used park(s)	STATISTICS .23%	
Rowing Boathouse	Choices Selected: 31 1 3.23% Total Responses: 31	
somehow get walk/bike path off bridge going towards Ripley	1	3.23%
Upgrade bathrooms at Hancock City beach.	1	3.23%
x	1	3.23%

Report from [www.SurveyGizmo.com](http://www.SurveyGizmo.com)



www.s

## Report: Copy of Response Summary Report

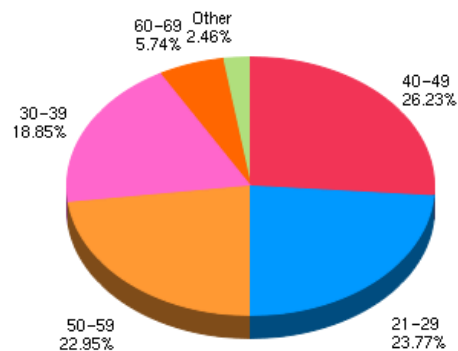
Survey: City of Hancock Bicycling Survey

Compiled: 05/03/2010

Filter Start: 03/01/2010

Filter End: 05/03/2010

### 1. How old are you?



#### SUMMARY

VALUE	COUNT	PERCENT %
40-49	32	26.23%
21-29	29	23.77%
50-59	28	22.95%
30-39	23	18.85%
60-69	7	5.74%
70 or older	2	1.64%
	1	

17-21

STATISTIC 0.82%

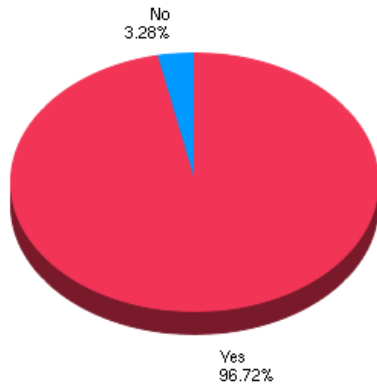
Choices Selected: 122

Total Responses: 122

Report from [www.SurveyGizmo.com](http://www.SurveyGizmo.com)



**2. Do you ride a bicycle?**



**STATISTICS**

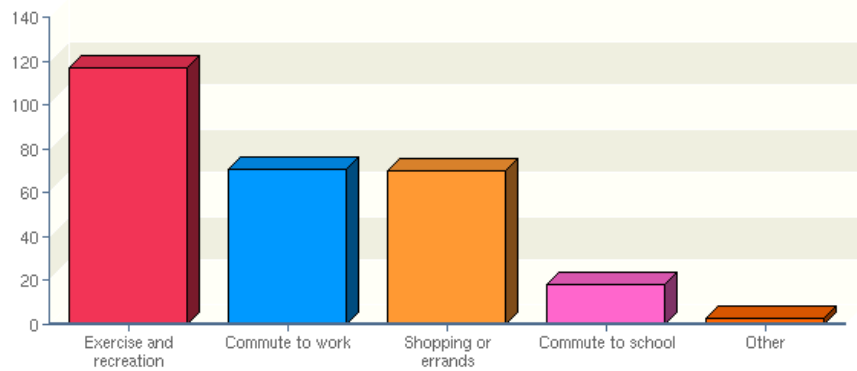
Choices Selected:	122
Total Responses:	122

**SUMMARY**

VALUE	COUNT	PERCENT %
Yes	118	96.72%
No	4	3.28%

Report from [www.SurveyGizmo.com](http://www.SurveyGizmo.com)

**3. Do you ride a bicycle for (choose all that apply):**



**STATISTICS**

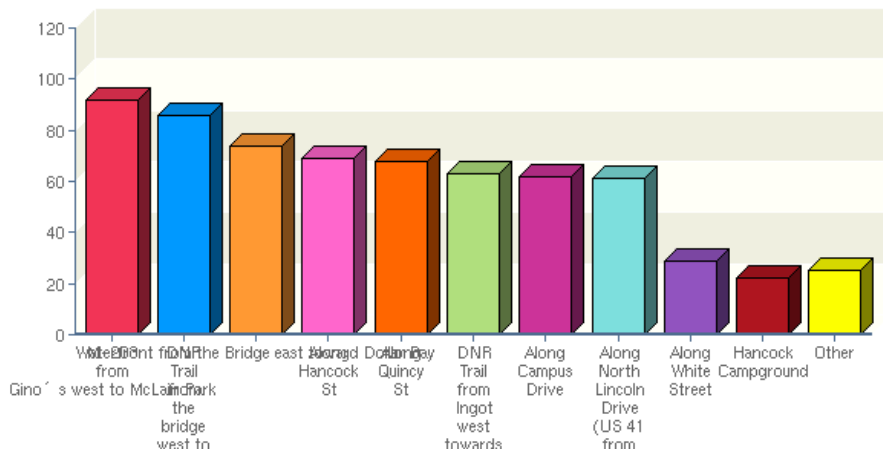
Choices Selected:	279
Total Responses:	118

**SUMMARY**

VALUE	COUNT	PERCENT %
Exercise and recreation	117	99.15%
Commute to work	71	60.17%
Shopping or errands	70	59.32%
Commute to school	18	15.25%
to events in Hancock or Houghton	1	0.85%
touring/camping	1	0.85%
training	1	0.85%

Report from [www.SurveyGizmo.com](http://www.SurveyGizmo.com)

**4. If you ride for Exercise and Recreation, please tell us where you ride. If you ride a portion of any of these route, please choose that route. Choose all that apply:**



**SUMMARY**

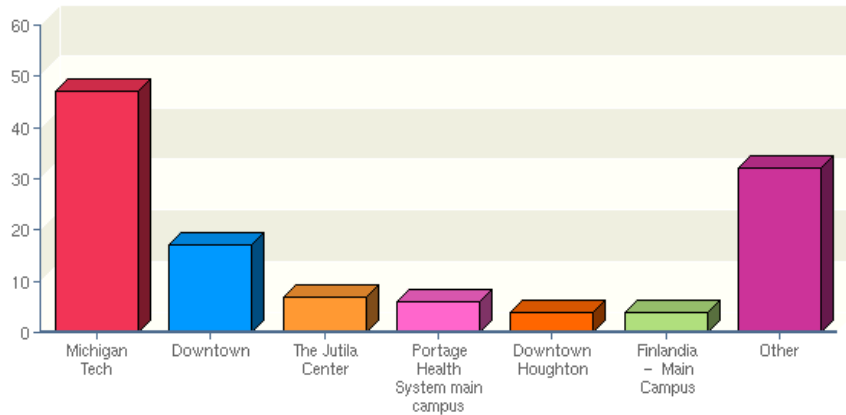
VALUE	COUNT	PERCENT %
M-203 from Gino's west to McLain Park	92	79.31%
DNR Trail from the bridge west to Ingot Street	86	74.14%
Waterfront from the Bridge east toward Dollar Bay	74	63.79%
Along Hancock St	69	59.48%
Along Quincy St	68	58.62%
DNR Trail from Ingot west towards Boston Location	63	54.31%
Along Campus Drive	62	53.45%
Along North Lincoln Drive (US 41 from Ginos to the Tire Shop)	61	52.59%
Along White Street	29	25.00%
Hancock Campground	22	18.97%
	3	

Maasto Hiito		2.59%
Maasto	2	1.72%
Along Ethel Street to the Keweenaw Food Co-op	1	0.86%
around laurn grove	1	0.86%
Birch,	1	0.86%
Every paved and unpaved road	1	0.86%
From Birch grove along the snowmobile trail	1	0.86%
from Ripley to Hancock Beach on Navy Street along the lake	1	0.86%
Hancock to Chassell, Hancock to Lake Linden	1	0.86%
have used most streets to get to DNRE Trails and to Maasto Hiito Trails	1	0.86%
Ingot to US 41 at Quincy Hill and Ingot to Elevation to Campus Drive	1	0.86%
Maasta Hiito and Churning Rapids	1	0.86%
maasto hiito trails	1	0.86%
Maasto Hiihto and Churning Rapids	1	0.86%
Maasto Hiihto, Churning Rapids	1	0.86%
Maasto Hiito trails	1	0.86%
Maasto Hito	1	0.86%
most city streets for going to stores	1	0.86%
mosto hito	1	0.86%

Swede town - dont ride in hancock to much traffic	STATISTIC	0.86%
up to the Portage Hospital	Choices Selected:	651 0.86%
US41 to Calumet, Hancock to Houghton (bridge), etc	Total Responses:	116 1 0.86%

Report from www.SurveyGizmo.com

### 5. If you use your bike to commute to school or work, what is your destination:



#### SUMMARY

VALUE	COUNT	PERCENT %
Michigan Tech	47	54.65%
Downtown	17	19.77%
The Jutila Center	7	8.14%
Portage Health System main campus	6	6.98%
Downtown Houghton	4	4.65%
Finlandia - Main Campus	4	4.65%
Airport	2	2.33%
Houghton	2	2.33%
Airport Industrial Park	1	1.16%
Baraga	1	1.16%
BRIDGE High School	1	1.16%

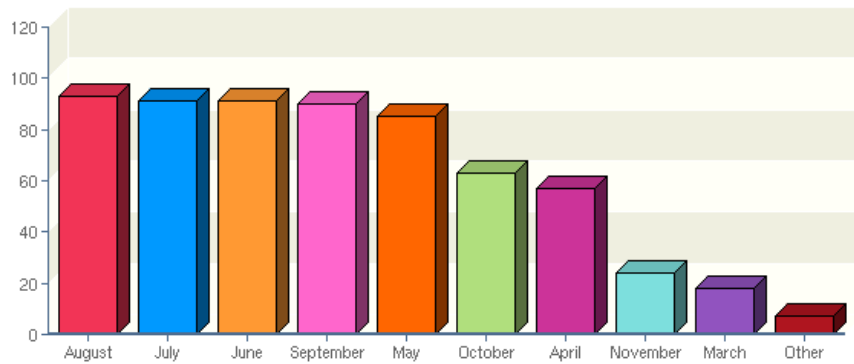
Cedar Bluff Dr. Houghton	1	1.16%
Citizens Bank Building	1	1.16%
City Hall	1	1.16%
coop, downtown, bridge	1	1.16%
Copper Country Mental Health	1	1.16%
Do not commute to school or work.	1	1.16%
Dollar Bay School	1	1.16%
East Houghton	1	1.16%
Health Department	1	1.16%
hospital	1	1.16%
Houghton County Airpark	1	1.16%
I live in Houghton and bike commute to MTU. I	1	1.16%
Keweenaw Co-op	1	1.16%
keweenaw coop	1	1.16%
Keweenaw Cooperative	1	1.16%
Lake Linden Highschool	1	1.16%
MTU Lakeshore Center	1	1.16%
National Park Service - Houghton	1	1.16%
none	1	1.16%

	STATISTICS	1.16%
South Range		
The Bike Shop - Houghton	Choices Selected:	117 1.16%
to Calumet	Total Responses:	86 1 1.16%
top of Quincy Hill	1	1.16%
up to Copper Country Mental Health	1	1.16%
work location on M203	1	1.16%

Report from [www.SurveyGizmo.com](http://www.SurveyGizmo.com)



### 6. What months of the year do you bike commute? (choose all that apply)



#### SUMMARY

VALUE	COUNT	PERCENT %
August	93	100.00%
July	91	97.85%
June	91	97.85%
September	90	96.77%
May	85	91.40%
October	63	67.74%
April	57	61.29%
November	24	25.81%
March	18	19.35%
December	3	3.23%
February	2	2.15%

January

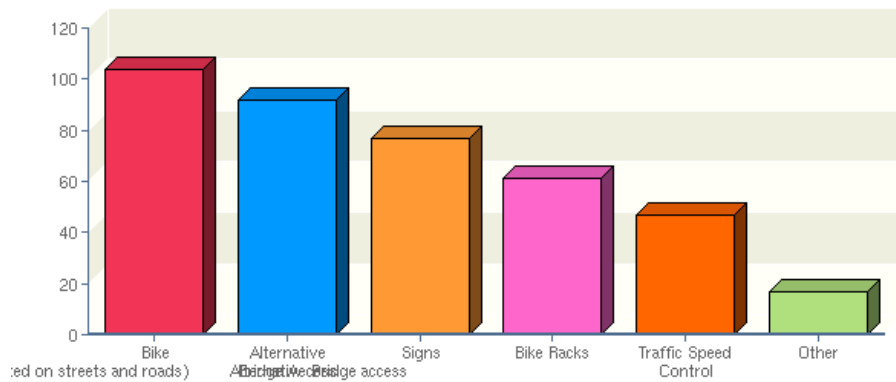
STATISTICS 15%

Choices Selected: 619

Total Responses: 93

Report from [www.SurveyGizmo.com](http://www.SurveyGizmo.com)

**7. What would you like the City of Hancock to do to improve bicycling in our City?  
(check all that apply)**



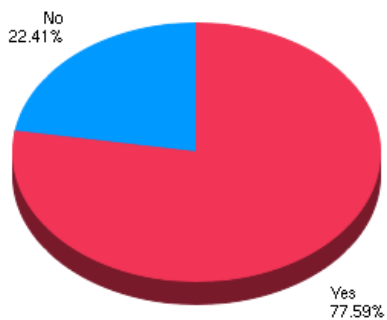
**SUMMARY**

VALUE	COUNT	PERCENT %
Bike Lanes(demarcated on streets and roads) Alternative Bridge access	104	88.89%
Alternative Bridge Access	92	78.63%
Signs	77	65.81%
Bike Racks	61	52.14%
Traffic Speed Control	47	40.17%
cell phone ban	1	0.85%
designated painted intersections	1	0.85%
driver and biker education	1	0.85%
Driver education	1	0.85%
enforcement of people "buzzing" riders	1	0.85%
	1	

	STATISTICS	0.85%
Fix potholes on the RH side on Hancock street!		
Improved connectivity and overall usefulness of bike/walking path	Choices Selected: 398	0.85%
Improving Ripley to dollar bay.	Total Responses: 117	1 0.85%
its all good	1	0.85%
more trails	1	0.85%
pave atv trail north of ingot to the hospital .	1	0.85%
public awareness of "share the road"	1	0.85%
Public service anouncements	1	0.85%
ramped access to all sidewalks. storm basins need to be flush with paved surfaces.	1	0.85%
See 12 & 13 above	1	0.85%
stencils on the road and Share the Road signs/brochures	1	0.85%
stricter police enforcement of laws against drivers pertaining to cyclists	1	0.85%

Report from www.SurveyGizmo.com

**8. Do you plan to ride your bike on Bike2Work Day on Friday, May 21, 2010?**



**STATISTICS**

Choices Selected:	116
Total Responses:	116

**SUMMARY**

VALUE	COUNT	PERCENT %
Yes	90	77.59%
No	26	22.41%

Report from [www.SurveyGizmo.com](http://www.SurveyGizmo.com)



www.s

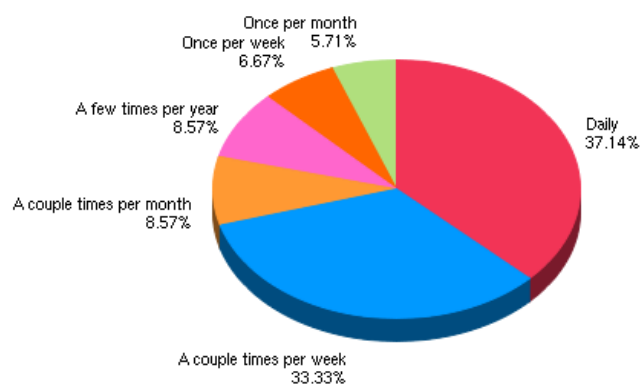
## Report: Response Summary Report #4

Survey: City of Hancock Walking Survey

Compiled: 05/03/2010

Filter Start: 03/01/2010 Filter End: 05/03/2010

### 1. How frequently to you walk in the City of Hancock?



#### STATISTICS

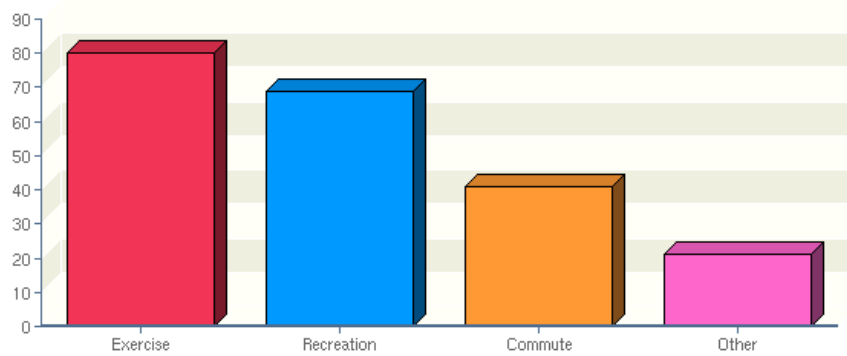
Choices Selected:	105
Total Responses:	105

#### SUMMARY

VALUE	COUNT	PERCENT %
Daily	39	37.14%
A couple times per week	35	33.33%
A couple times per month	9	8.57%
A few times per year	9	8.57%
Once per week	7	6.67%
Once per month	6	5.71%

Report from [www.SurveyGizmo.com](http://www.SurveyGizmo.com)

## 2. What is your reason for walking? Check all that apply.



### SUMMARY

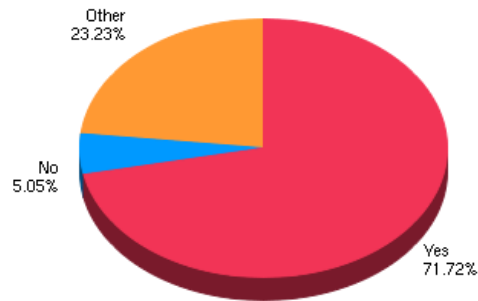
VALUE	COUNT	PERCENT %
Exercise	80	76.19%
Recreation	69	65.71%
Commute	41	39.05%
shopping	3	2.86%
grocery shopping	2	1.90%
access to area business	1	0.95%
dogs	1	0.95%
errands	1	0.95%
errands, PO, Bank, NWB, Shops	1	0.95%
errands, shopping, post office	1	0.95%
occasional commute	1	0.95%



	STATISTIC	0.95%
Pedestrian by birth		
Shopping & Errands	Choices Selected: 211	0.95%
Shopping and going to restaurants	Total Responses: 105	1 0.95%
Shopping at Pat's	1	0.95%
tension release	1	0.95%
To avoid DUI	1	0.95%
to get to local dining and bars	1	0.95%
visting local stores	1	0.95%
walk dog	1	0.95%
Walking dog on leash.	1	0.95%

Report from www.SurveyGizmo.com

### 3. Do you feel comfortable and safe walking after dark? If no, please specify.



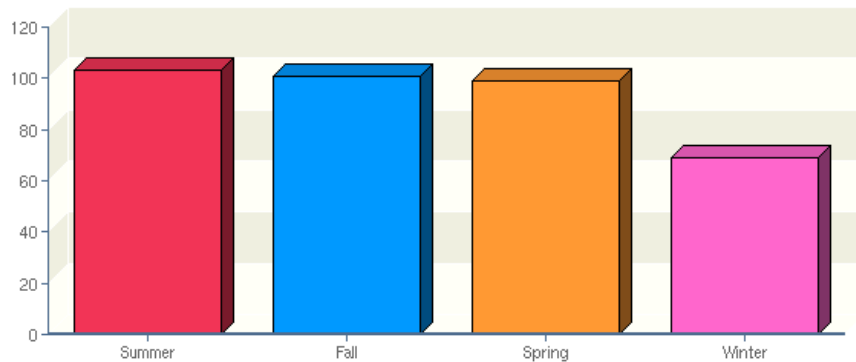
#### SUMMARY

VALUE	COUNT	PERCENT %
Yes	71	71.72%
No	5	5.05%
Bad sidewalks	1	1.01%
Creepy people and wild animals	1	1.01%
dark, never really safe	1	1.01%
hard to see	1	1.01%
I do not	1	1.01%
I don't feel safe on the bike path at dusk or after dark. Downtown is fine though.	1	1.01%
I'd like better pavement to walk on.	1	1.01%
I'm OK with short walks in my neighborhood or walking with someone else	1	1.01%
I've never liked walking after dark.	1	1.01%

	STATISTICS	1.01%
Lack of sidewalks, automobile mentality.		
	Choices Selected: 99	
more and better lighting	1	1.01%
	Total Responses: 99	
My eyesight!	1	1.01%
need a few more streetlights	1	1.01%
no shoulder on the road to walk / ride and the trail is dark.	1	1.01%
No sidewalks, inattentive drivers	1	1.01%
not by myself	1	1.01%
not on every route	1	1.01%
not on the bike trail	1	1.01%
Prefer not to walk anywhere after dark.	1	1.01%
safe in most areas	1	1.01%
so I don't do it	1	1.01%
Speed limit enforcement is ineffective.	1	1.01%
Traffic goes TOO FAST.	1	1.01%

Report from www.SurveyGizmo.com

**4. Which seasons do you walk in? (Please check all that apply)**



**STATISTICS**

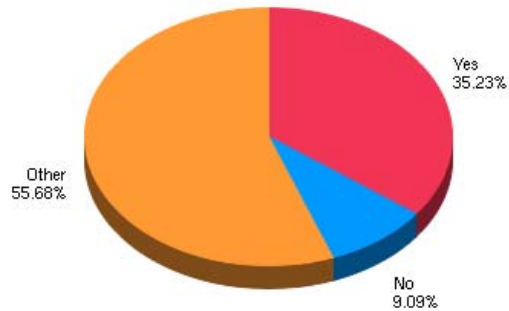
Choices Selected:	372
Total Responses:	103

**SUMMARY**

VALUE	COUNT	PERCENT %
Summer	103	100.00%
Fall	101	98.06%
Spring	99	96.12%
Winter	69	66.99%

Report from [www.SurveyGizmo.com](http://www.SurveyGizmo.com)

**5. If you walk in the winter, do you feel safe walking on the streets if the sidewalks are not cleared? If no, please specify.**



**SUMMARY**

VALUE	COUNT	PERCENT %
Yes	31	35.23%
No	8	9.09%
It can be slippery and slow going navigating large ice mounds	1	1.14%
a lot of times there is snow on my sidewalk	1	1.14%
Access to Bridge is unsafe in winter	1	1.14%
age	1	1.14%
Along US 41 snow forces me onto US 41 on Hancock St	1	1.14%
driverd do not care about peds.	1	1.14%
Drivers can't always control their cars when passing. It just increases risk of being hit.	1	1.14%
especially dangerous crossing and walking along US41	1	1.14%
	1	

fine people who plow onto sidewalks making for hazardous areas		1.14%
have to be very careful of cars, snow piles make road narrow	1	1.14%
I am afraid to fall on the ice going down hill	1	1.14%
I wear tracs	1	1.14%
I worry about falling on icy roads	1	1.14%
icy; also slush in spring	1	1.14%
Icy roads and steep streets are hard to navigate	1	1.14%
If it is stormy out, will drivers see me?	1	1.14%
It gets quite slippery, or the sidewalks are so full of snow I have to walk on the street if I am not in the downtown core.	1	1.14%
It's dangerous	1	1.14%
It's much harder to walk and it's sometimes very slippery	1	1.14%
narrow roads with traffic are hazardous	1	1.14%
no side walks	1	1.14%
no where to walk on hancock st by Fine Line Tire	1	1.14%
not always, but I do it anyway	1	1.14%
not much room on the roads	1	1.14%
Not on Elevation St	1	1.14%
Not safe walking on the roads, not plowed well enough.	1	1.14%
Often times the traffic is too thick or traveling above the speed limit. It is often difficult to walk on the side of the street since the snow isn't	1	1.14%

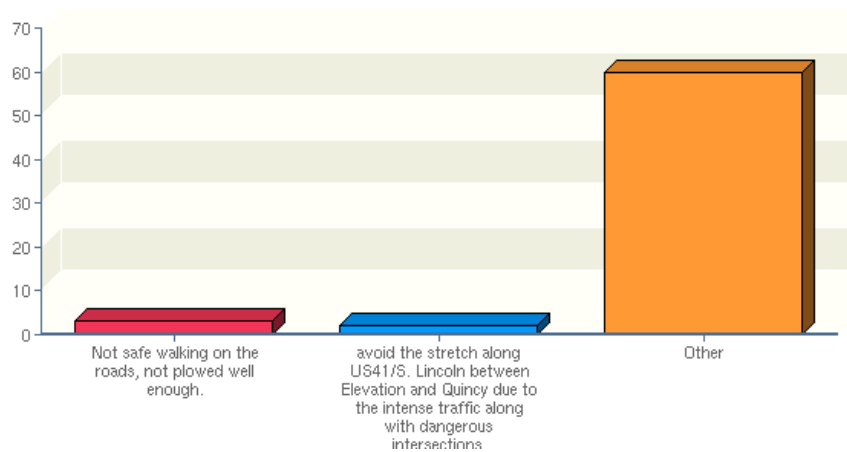
usually cleared even from the edge.		
only if the snowbanks puch me out onto the road	1	1.14%
Only on major roads, residential ok	1	1.14%
Only the case near and approaching the bridge	1	1.14%
Path to Pat's is very treacherous	1	1.14%
peds have more legal rights on sidewalks	1	1.14%
people drive fast and there isn't much of the road cleared, and the hills can be dangerous	1	1.14%
road is busy	1	1.14%
snow banks are high, car can't see around them.	1	1.14%
Speed limit enforcement is ineffective.	1	1.14%
streets get narrow with snow	1	1.14%
Streets with excessive snow at curb makes one walk further into the road.	1	1.14%
that's why i don't walk in the winter, icy sidewalks	1	1.14%
The hills can be treacherous and it's almost impossible to walk on White Street to Pat's Foods. Very unwalkable.	1	1.14%
The sidewalks downtown are always fantastic, but there are really no other places with a good berth away from the road. r	1	1.14%
too icy	1	1.14%
traffic to close	1	1.14%
Usually I feel safe, except for corners or slopes that are icy.	1	1.14%
Vehicular trasffic a major concern especially when crossing HWY 41.	1	1.14%

	STATISTICS	
very slippery	1	1.14%
Walkway to world of wood parking lot can be VERY slippery in winter	1	1.14%
White street up the hill is not walkable in winter	1	1.14%
without side walk I can't walk around	1	1.14%

Report from [www.SurveyGizmo.com](http://www.SurveyGizmo.com)



## 6. Are there routes you avoid walking in winter/ summer and why? (Please elaborate)



### SUMMARY

VALUE	COUNT	PERCENT %
Not safe walking on the roads, not plowed well enough.	3	7.69%
avoid the stretch along US41/S. Lincoln between Elevation and Quincy due to the intense traffic along with dangerous intersections.	2	5.13%
any streets where the sidewalks are not cleared and there is regular traffic (along or crossing US41 is especially dangerous)	1	2.56%
any uphill route	1	2.56%
avoid 41 as much as possible, instead take upper route through old middle school and FU campus	1	2.56%
avoid 41S from ingot to bridge - little cleared area and too many snowmoblies	1	2.56%
avoid Front Street between Hillside Street and the bridge due to heavy traffic and intense slush	1	2.56%
busy sideroads	1	2.56%
Corner of Quincy and Tezcucco--icy	1	2.56%
dark areas since we go in the morning	1	2.56%

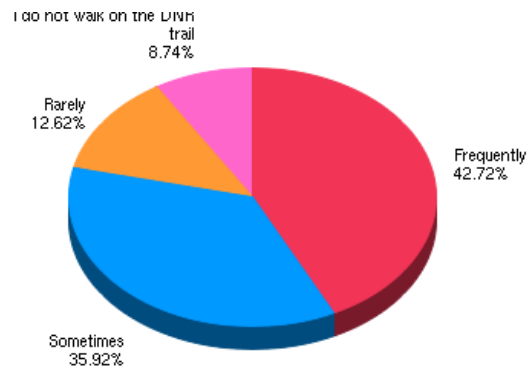
DNRE trail	1	2.56%
DNRE trail - snowmobiles	1	2.56%
DNRE trail at night	1	2.56%
don't walk near N. Lincoln Drive and intersecting streets due to lack of sidewalks, heavy traffic, and major snowpiles	1	2.56%
Down the steeper streets because of ice and no sidewalks, except where pedestrian stairways are available	1	2.56%
Downtown Hancock to Portage Bridge - Poor or no plowing of sidewalks outside of Downtown to Bridge	1	2.56%
downtown is too slippery	1	2.56%
Downtown! Traffic is terrible for strollers!	1	2.56%
east hancock	1	2.56%
Elevation - lots of traffic and sometimes sidewalks aren't plowed clear	1	2.56%
elevation, hwy 41 r/t traffic	1	2.56%
Hancock St. at Depot Intersection due to snow piles.	1	2.56%
Hancock/Calumet trail because you are in danger of getting hit by a snowmobile and their exhaust is horrible to walk next to	1	2.56%
Hopefully the new dog ordinance will make neighbors keep dogs on a leash so we can walk the dog without fear of loose dogs.	1	2.56%
hospital - snow	1	2.56%
I don't go on the snowmobile trail in winter - too dangerous with the motorized vehicles	1	2.56%
I snowshoe on the Maasto Hihto	1	2.56%
I try to limit family time walking or biking on DNR trail due to atvs/motorbikes	1	2.56%

I won't run in the City in Winter and Spring when there is ice on the sidewalks.	1	2.56%
Lincoln	1	2.56%
Lincoln, too busy with cars and I don't want to inhale fumes	1	2.56%
Maasto trails because of snowmobiles	1	2.56%
main roads without sidewalks	1	2.56%
McKinley: untethered mean dog	1	2.56%
McKinley: untethered mean dogs	1	2.56%
my husband wont walk with me from the blinking light at pat's down towards the curve and ginos. there is no sidewalk on the left side and it gets dicey with the cars	1	2.56%
night time on the trail	1	2.56%
None	1	2.56%
Portage - speed and volume of traffic	1	2.56%
Quincy Street west of Calumet St.	1	2.56%
S. Lincoln drive, trying to get from one side to the other. Crossing 3 lanes of traffic, that is going too fast.	1	2.56%
S. Lincoln drive, trying to get from one side to the other. Crossing 3 lanes of traffic, that is going too fast. Made worse by the unplowed snow.	1	2.56%
side streets (Hill, Ingot) No sidewalks, icy	1	2.56%
snowmobile trail	1	2.56%
South Lincoln Drive to down town because snowmobiles use trail	1	2.56%
South Lincoln, too many cars blocking sidewalk	1	2.56%

	STATISTIC	2.56%
streets with heavy car traffic and poor pedestrian right-of-ways		
streets without shade	1	2.56%
streets without sidewalks or with obstructed sidewalks	1	2.56%
Tezcucco street	1	2.56%
The entrance to the mini-mall for Pat's Foods is barely walkable if cars are turning there. No sidewalk on the hill up to the parking lot.	1	2.56%
the snowmobile trail traffic	1	2.56%
The stretch of Front Street between the Ripley turnoff of the brige, and the BP station. Traffic moves too fast, and it feels like you're out in the open, waiting to get hit.	1	2.56%
traffic	1	2.56%
trail, snowmobile traffic	1	2.56%
try to only cross S. Lincoln Drive near Michigan Street due to so much traffic and dangerous intersections closer to downtown or closer to the curve where the street turns into N. Lincoln Drive	1	2.56%
Up Quincy Hill fear of cars plows, etc. hitting me.	1	2.56%
Up white street	1	2.56%
Walking anywhere downhill, especially from near Rt. 41 down to Finlandia.	1	2.56%
White Street sidewalk not cleared	1	2.56%
white street up towards pat's	1	2.56%
White Street, snow on sidewalk	1	2.56%

Report from www.SurveyGizmo.com

**7. How often do you walk on the DNRE trail?**



**STATISTICS**

Choices Selected:	103
Total Responses:	103

**SUMMARY**

VALUE	COUNT	PERCENT %
Frequently	44	42.72%
Sometimes	37	35.92%
Rarely	13	12.62%
I do not walk on the DNR trail	9	8.74%

Report from [www.SurveyGizmo.com](http://www.SurveyGizmo.com)

**8. If you walk on the DNR trail are you bothered by having to share the trail with bicycles and four wheelers? If yes, please comment.**



**SUMMARY**

VALUE	COUNT	PERCENT %
No	49	51.04%
4 wheelers and motorized bikes drive too fast and are loud	1	1.04%
4 wheelers are bad, bikes OK	1	1.04%
4 wheelers bother me w/dust and they are huge. Bikes are ok.	1	1.04%
4 wheelers/dirt bikes go too fast	1	1.04%
4-wheelers	1	1.04%
4-wheels kick up dust, dirt, some speed	1	1.04%
a few fourwheelers don't slow	1	1.04%
atvs go too fast and don't look for pedestrians	1	1.04%
ATVs make the trail dusty and soft sandy so hard to walk on towards Lake Linden	1	1.04%
	1	

Bikes are Great - 4 wheels are not great - kids way too young driving way too fast		1.04%
bikes ok, four wheelers are scary	1	1.04%
by four wheelers, bicycles are fine	1	1.04%
four wheelers and snowmobilers speed. quads spit gravel onto trail - hard to bike.	1	1.04%
four wheelers are loud and they drive too fast	1	1.04%
four wheelers are scary and I have seen cars! on that trail	1	1.04%
I also dislike that in the winter I cannot walk on it because of the snowmobiles. I am afraid four wheelers will not see me.	1	1.04%
I am absolutely bothered by motorized vehicles sharing the path.	1	1.04%
I am into silent sports, so motorized vehicles disrupts the purpose of my recreation	1	1.04%
I am not bothered by sharing the trail with bikes, but avoid the trail when there are four-wheelers and snowmobilers do to their speed	1	1.04%
I am only bothered by four wheelers due to speed, noise and exhaust fumes	1	1.04%
I don't mind bikes but I dislike four wheelers - they are louder and don't seem to see pedestrians until the last minute.	1	1.04%
I don't mind bikes, but the motorized traffic usually is going very fast. The vehicles (and riders) kick up dust and make a lot of noise (which bothers dogs). Sometimes the riders seem very young and are often very disrespectful of pedestrians and bicycles.	1	1.04%
I don't mind sharing with bicycles, but four wheelers make me uncomfortable because they drive fast and are very loud, which disturbs my outdoor experience.	1	1.04%
i get bothered in the nonwinter months by four wheelers because they don't always slow down and it creates too much dust	1	1.04%
If speed limits were enforced it would not be a problem but ATV and motor bikes go too fast. Bicycles not usually a problem.	1	1.04%
if the atv's don't slow way down	1	1.04%

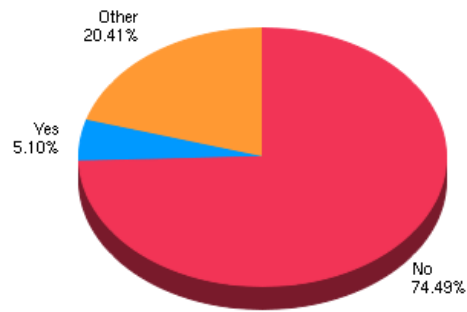
just four wheelers	1	1.04%
Just motorized vehicles, but I would rather have them on there than ripping up other lands	1	1.04%
Mostly with the ATVs on the gravel portions. Some have little respect speed past me and kick up a bunch of dust, which is awful when I am running.	1	1.04%
Motorcycles and 4 wheelers speeding coming too close to bikers or walking. Excessive noise as well. I'm not against those type of vehicles, I'm just not for the unregulated/unsafe driving habits of some participants.	1	1.04%
motored vehicles only, bicycles are okay	1	1.04%
Not bicyclers, just four -wheelers, and only those that drive very fast.	1	1.04%
Not bothered by bike, bothered by 4wheelers	1	1.04%
not safe when a four wheeler blows by a bike at 50 mph	1	1.04%
Occasionally bothered by motorized vehicles	1	1.04%
only if 4-wheelers are going fast	1	1.04%
Only on the dirt trails as they kick dust at you when it is dry out.	1	1.04%
Only when 4-wheelers are not respectful	1	1.04%
Sometimes the four wheelers are very INconsiderate.	1	1.04%
summer use should be non-moterized	1	1.04%
The four wheelers can come up on you pretty fast and often make you get off the trail. Most four wheelers do not heed the speed limit.	1	1.04%
the majority of ORVs on the trail exceed the speed limit, it is also bothersome breathing their exhaust and eating their dust they kick up	1	1.04%
There is not enough room for four wheelers to pass you	1	1.04%
Well, I prefer not having to share with four wheelers, but sharing is	1	



better than not having any at all.	STATISTICS	1.04%
Yes	Choices Selected:	96
	1	1.04%
	Total Responses:	96
Yes, with ATV's, almost always too fast and loud.	1	1.04%
younger operators speed. dust on the non-paved areas	1	1.04%

Report from [www.SurveyGizmo.com](http://www.SurveyGizmo.com)

**9. Do you ever walk on Hancock's alleys? If yes, please comment.**



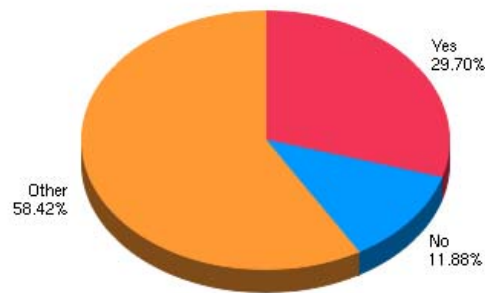
**SUMMARY**

VALUE	COUNT	PERCENT %
No	73	74.49%
Yes	5	5.10%
as a shortcut	1	1.02%
good bird watching, scenic, safe, quiet, soft footing	1	1.02%
Hancock's alleyways attract me. They represent shortcuts used by area residents. They represent paths, lives and time. The people who created and use them share history and space.	1	1.02%
I have behind my home and I use it regularly.	1	1.02%
i have friends who live there	1	1.02%
I love hancock's alleys	1	1.02%
occasionally in my neighborhood	1	1.02%
On lunch break if I have to take the dog for a short walk. She likes to look for chipmunks	1	1.02%
	1	

	STATISTICS	
only behind my house	1	1.02%
Only for a specific purpose (e.g. view the property recently for sale behind Summit)	1	1.02%
Recently for the first time - enjoyed taking a different route	1	1.02%
Seems fine	1	1.02%
sometimes	1	1.02%
These are the safest, most pleasant (grass, shade, no traffic) places to walk in town. They are also nice places to walk with children and dogs. Please keep these open as public pathways.	1	1.02%
They are a pleasant diversion on recreational walks.	1	1.02%
To get to world of wood city lot	1	1.02%
Very rarely but many people walk through my alley between S. Lincoln Drive and Summit Street.	1	1.02%
Very seldom but occasionally	1	1.02%
what do you mean by alleys? i walk on small back streets	1	1.02%
When I feel sneaky - not often	1	1.02%

Report from [www.SurveyGizmo.com](http://www.SurveyGizmo.com)

### 10. Do you walk across the bridge to Houghton? Please comment.



#### SUMMARY

VALUE	COUNT	PERCENT %
Yes	30	29.70%
No	12	11.88%
iwish that walking on the bridge did not require running through traffice or crossing under the bridge, particularly in wainter when snowmobiles are around	1	0.99%
At least once a week, hate it! The cars make me nervous	1	0.99%
But only from the Houghton side	1	0.99%
easier to walk than swim :-)	1	0.99%
For commuting to work	1	0.99%
For exercise and during a festival such as Bridgefest	1	0.99%
For Parade of Nations, special occasions.	1	0.99%
generally feel safe	1	0.99%
	1	

good access		0.99%
Hazardous to cross highways to and from Bridge sidewalks	1	0.99%
I am a student and walk to school	1	0.99%
I bike.	1	0.99%
I do	1	0.99%
I love it, but it would be really nice to see stairs or a ramp on the hancock side	1	0.99%
I love the stair park at the bridge	1	0.99%
I love to walk across the bridge, but it is very very difficult to cross the roads north and south of the bridge during busy commuting times. Some way to provide pedestrian walkways on each side of the bridge would be wonderful!	1	0.99%
I mostly bike. Signs should be changed to 'Bikes yield to pedestrians'	1	0.99%
I think the bridge needs a wider walk or a bike lane	1	0.99%
I usually bike across the bridge.	1	0.99%
I walk and bike across the bridge.	1	0.99%
I walk to restaurants, bars and around the paved shoreline trail	1	0.99%
I will walk across that bridge this winter!	1	0.99%
i wish there was a better way to get from the trail that leads to the Ramada to the bridge	1	0.99%
I'd like to walk on the lower part of the bridge to Houghton when the Bridge is lowered if at all possible	1	0.99%
icy in the fall, but you can't do anything about that...	1	0.99%
If the sides were a little higher, could bike on sidewalk	1	0.99%

It is easier to switch sides of the bridge from the Houghton side.	1	0.99%
It is hard to get on the bridge from the Hancock side at the canal level	1	0.99%
It is very difficult to navigate on how to get onto the bridge through all of the lanes of traffic. I wish there was a button I could press that could cause a flashing lights for drivers to be aware of my presence. I truly fear for the elderly and people pushing strollers since it must be extremely difficult to navigate through the traffic and tall curbs. The curb on Front Street is too high.	1	0.99%
it would be much easier to do this if there was a way to cross more safely from east H or downtown Hancock	1	0.99%
It would be nice to have a lower access that's always open	1	0.99%
It would be nice to have a seperate lane for bicycles.	1	0.99%
just do	1	0.99%
just in summer	1	0.99%
Lot of traffic noise, sharing very narrow passage with cyclists	1	0.99%
need a bike lane on bridge	1	0.99%
needs better pedestrian crossing at both ends	1	0.99%
Not never but it's a rare occurance	1	0.99%
occasional to work or shop, or eat out	1	0.99%
Occasionally	1	0.99%
Occasionally but never in winter.	1	0.99%
occasionally in summer	1	0.99%
once a week - but hard to get on bridge to walk	1	0.99%
	1	

	STATISTIC	0.99%
Once every couple of years.		
Rarely, will usually bike to go that far	Choices Selected: 101	0.99%
Stairways are needed to get up to the top level of the bridge from down by the Ramada and/or a pedestrian path on the lower section of the bridge	Total Responses: 101	
	1	0.99%
The street crossings are bad on both sides of the bridge, both for bikers and walkers.	1	0.99%
The walk across the bridge is generally pleasant; however sometimes it is hard to cross 26 heading to Hancock on the East sidewalk due to lack of visibility of turn signals on cars heading toward Dollar Bay.	1	0.99%
This route needs improvement especially when having to cross the highway	1	0.99%
too far for me	1	0.99%
Traffic moves too fast, it takes forever to cross, and motorists are often impatient to get on the bridge, often not noticing pedestrians trying to cross.	1	0.99%
usually it's fine; one day last winter the path was not plowed and it was very hard	1	0.99%
waling is fine, but the walk-ways are hard to share with bikes. Biking on the roadway seems dangerous to many bikers. Too bad there isn't a way to make a specific bike lane to separate bikes, cars, and pedestrians.	1	0.99%
Walk to Michigan Tech or downtown Houghton bars	1	0.99%
we need a set of stairs up to the walking level similar to what Houghton has	1	0.99%
When I stayed at RV park in Houghton I would walk home sometimes.	1	0.99%
When it's warm enough	1	0.99%
whenever I ride my bike since you are supposed to walk you bike	1	0.99%
yes. access from the waterfront to bridge would be great.	1	0.99%

**Appendix B: CITY COUNCIL MEETING NOTICES AND MINUTES**

DRAFT